



香港學界體育聯會 Hong Kong Schools Sports Federation

港島及九龍地域中學分會 HK Island and Kowloon Secondary Schools Regional Committee

中學體育運動比賽手冊
SECONDARY SCHOOLS
GENERAL INFORMATION BOOKLET

2011-2012

主辦 Organised by:



香港學界體育聯會
港島及九龍地域中學分會
HKSSF-HKSSRC

資助 Subvented by:



康樂及文化事務署
Leisure and Cultural
Services Department

教育局
Education Bureau

贊助 Sponsored by:



中銀香港慈善基金
BOCHK CHARITABLE FOUNDATION

Foreword

Mrs. Stella Lau, JP
Chairlady, HK Island & Kowloon
Secondary Schools Regional Committee

The Regional Committee is most happy to secure the support from Bank of China (Hong Kong) again. With the sponsorship, we are able to refine the existing operation of competition; to organize development programme for convenors, officials and athletes; strengthen public relation activities and to launch new sports events. Furthermore, Bank of China (Hong Kong) will continue to support the BOCHK Bauhinia Bowl and Outstanding Athletes Awards to recognize excellent performance achieved by schools and individuals.

I am confident that with the support of Bank of China (Hong Kong), the Regional Committee will be able to work much more effectively and efficiently to promote schools sports in the Hong Kong Island & Kowloon Region.

前 言

劉靳麗娟校長, JP
港島及九龍地域中學分會主席

本會很高興繼續獲得中國銀行（香港）的鼎力支持，贊助本會經費，令本會的比賽管理工作得以提升，同時可為各主委、工作人員及運動員安排一些增值、發展及交流活動，並加強報導學界比賽的消息及增辦新的運動項目。此外，中國銀行（香港）繼續贊助「中銀香港紫荊盃」獎項及傑出運動員獎，以表揚各學校及同學在體育上的卓越成就。

我們深信：得到中國銀行（香港）支持後，本會更能有效及完善地發展港島及九龍地域中學運動比賽。

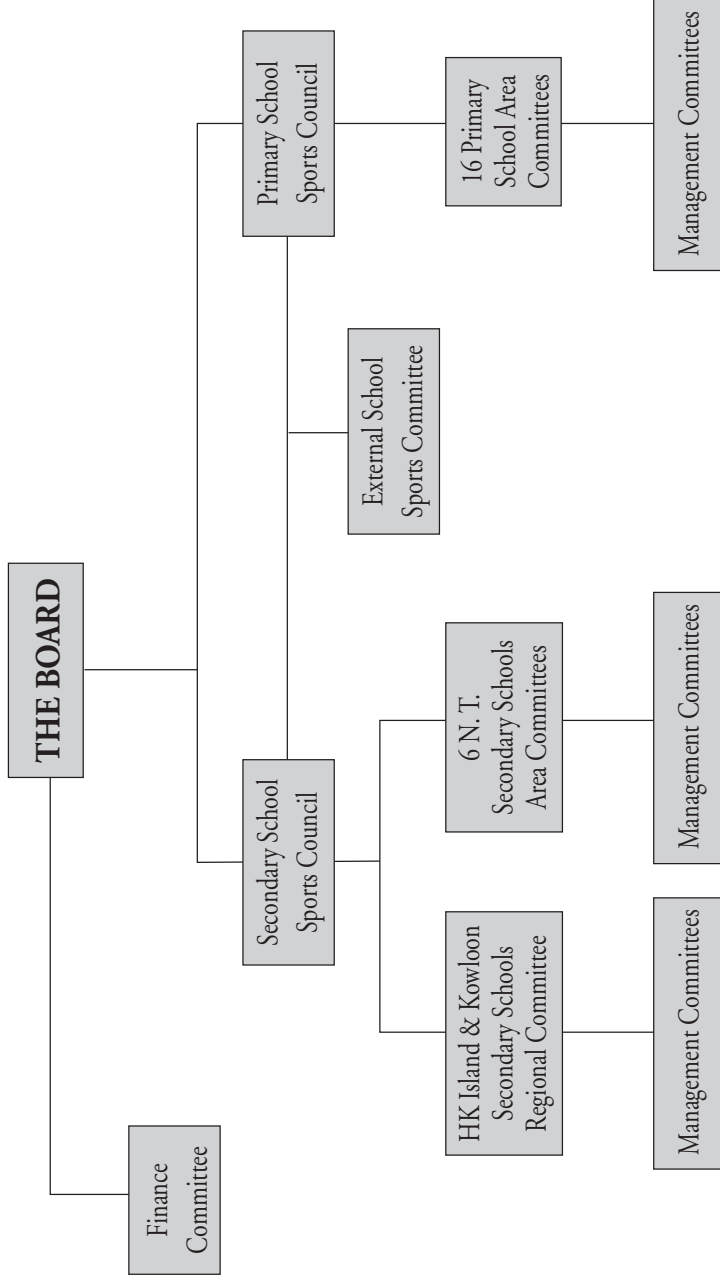
CONTENTS

	Pages
1. Organisation Structure of the Hong Kong Schools Sports Federation	1
2. The Board 2011-2012	2
3. The Secondary School Sports Council 2011-2012	3
4. The External School Sports Committee 2011-2012	4
5. The HK Island and Kowloon Secondary Schools Regional Committee 2011-2012	5
6. Notice of General Sports Meeting	6
7. Agenda	6
8. Sports Entries	6
9. Sports Management Committees	7
10. System of Competition	8-10
11. General Rules of Sports Competition	11-14
12. Student Registration Procedure and System	15-17
13. Sports Calendar	18-19
14. Sports Entry Fees - Team & Individual	20
15. Events for all Hong Kong Secondary Schools & Hong Kong Schools Jing Ying Tournaments	21-25
16. General Rules of	
16.1 Athletics	26-33
16.2 Badminton	34-35
16.3 Basketball	36-37
16.4 Cross-Country	38-39
16.5 Fencing	40-41
16.6 Football	42-43
16.7 Handball	44-45
16.8 Hockey (Boys)	46
16.9 Hockey (Girls)	47-48
16.10 Netball	49
16.11 Rugby	50
16.12 Squash	51-52
16.13 Swimming	53-56
16.14 Table-Tennis	57-58
16.15 Tennis	59-60
16.16 Volleyball	61-62
17. By-Laws & Rules	63-68
18. Collective Personal Accident Insurance Policy	69-70
19. BOCHK Bauhinia Bowl Award	71-75
20. BOCHK Bauhinia Bowl Outstanding Athlete Award	76-77
21. LCSD Sporting Facilities for Inter-School Competition	i-v

HONG KONG SCHOOLS SPORTS FEDERATION HK ISLAND AND KOWLOON OFFICE

Room 203, 1st floor, 7 Carmel Village Street, Homantin, Kowloon, Hong Kong
Tel: 2711 9182 Fax: 2761 9808 Email: hkssrc@hkssf.org.hk Website: www.hkssf.org.hk

HONG KONG SCHOOLS SPORTS FEDERATION ORGANISATION STRUCTURE



THE BOARD (2011-2012)

- Chairlady:** Mrs. Stella Lau, JP
(*Diocesan Girls' School*)
- Vice-Chairman:** * Mr. Yeung Hoi Cheung
(*Sha Tin Wai Dr. Catherine F. Woo Memorial School*)
- Hon. Treasurer:** Mr. Chow Ping Yan
(*Holy Carpenter Secondary School*)
- Members:** Mr. Chan Lap Sun
(*Wong Tai Sin Catholic Primary School*)
- Mr. Cheng Cho Chak
(*Baptist Lui Ming Choi Secondary School*)
- Mr. Fung Chin Choi
(*TWGHs Wong Yee Jar Yat Memorial Primary School*)
- Mr. Kwan Wai Yick
(*SKH St. Michael's Primary School*)
- Mr. Lai Wing Chun
(*Maryknoll Secondary School*)
- Mr. Lam Luk Wing
(*Lam Tsuen Public Wong Fook Luen Memorial School*)
- Ms. Lam Yuen Kwan
(*Chan Shu Kui Memorial School*)
- [^] Mr. Lee Chee Wah
(*Ying Wa College*)
- * Mr. Lee Siu Hok
(*SKH Yau Tong Kei Hin Primary School*)
- Mr. Lin Chun Pong
(*Ng Yuk Secondary School*)
- Mr. Ng Wai Shing
(*Good Hope School*)
- Dr. Siu Ngok Huen
(*CCC Mong Wong Far Yok Memorial Primary School*)

* Retired as from 1.9.2011

[^] Resigned as from 1.9.2011

SECONDARY SCHOOL SPORTS COUNCIL (2011-2012)

- Chairlady:** Mrs. Stella Lau, JP
(*Diocesan Girls' School*)
- Vice-Chairman:** Mr. Yeung Wing Kee
(*De La Salle Secondary School N.T.*)
- Members:** Mr. Cheung Wai Ching
(*King Ling College*)
Mr. Kwok Kin Kee
(*Rosaryhill School*)
Mr. Lai Wing Chun
(*Maryknoll Secondary School*)
^ Mr. Lee Chee Wah
(*Ying Wa College*)
Mr. Lee Hing Yiu
(*Aberdeen Technical School*)
Mr. Leung Chi Shing
(*TWGHs Lee Ching Dea Memorial College*)
Mr. Ng Wai Shing
(*Good Hope School*)
Mrs. Siu Chow Sau Wah
(*St. Stephen's College*)
Mr. Wong Chiu Keung
(*Hong Kong True Light College*)
Mr. Yu Po Hing
(*Kowloon True Light Middle School*)
Mr. Chan Kai Fat
(*Yan Chai Hospital No.2 Secondary School*)
Mr. Chung Lui Pong
(*Lock Tao Secondary School*)
Mr. Lai Hung
(*CCC Kei Long College*)
Mr. Lee Siu Leung
(*Tin Shui Wai Methodist College*)
Mr. Leung Pak Chung
(*Textile Institute American Chamber of Commerce Woo Hon Fai Secondary School*)
Mr. Lin Chun Pong
(*Ng Yuk Secondary School*)
Mr. Lo Mo Ling
(*STFA Lee Shau Kee College*)
Mr. Ng Siu Ki
(*H.K. & Kln. Kaifong Women's Association Sun Fong Chung College*)
Mr. Suen Shui Keung
(*Cotton Spinners Association Secondary School*)
Mr. Yu Tai Wai
(*Yan Chai Hospital No. 2 Secondary School*)
- Secretary:** Ms. Ho Kim Fai
(*Hong Kong Schools Sports Federation*)

^ Resigned as from 1.9.2011

EXTERNAL SCHOOL SPORTS COMMITTEE (2011-2012)

- Chairman:** Mr. Lai Wing Chun
(Maryknoll Secondary School)
- Vice-Chairlady:** Ms. Chan Lai Cheng
(King's College Old Boys' Association Primary School No.2)
- Vice-Chairman:** Mr. Yeung Wing Kee
(De La Salle Secondary School, NT)
- Members:** Dr. Kwan Lee Wing
(Shek Wu Hui Public School)
- Mr. Lee Fu Sing
(YCH Choi Hin To Primary School)
- Mr. Lee Hing Yiu
(Aberdeen Technical School)
- Mr. Leung Chi Shing
(TWGHs Lee Ching Dea Memorial College)
- Mr. Leung Siu Tong
(HKFEW Wong Cho Bau School)
- Mr. Lui Cheuk Kuen
(PLK Grandmont Primary School)
- Mr. Suen Shui Keung
(Cotton Spinners Association Secondary School)
- Secretary:** Ms. Aalim Lam
(Hong Kong Schools Sports Federation)

HK ISLAND AND KOWLOON SECONDARY SCHOOLS REGIONAL COMMITTEE (2011-2012)

- Chairlady:** Mrs. Stella Lau, JP
(*Diocesan Girls' School*)
- Vice-Chairmen:** Mr. Lai Wing Chun
(*Maryknoll Secondary School*)
Mr. Ng Wai Shing
(*Good Hope School*)
- Hon. Secretary:** [^] Mr. Lee Chee Wah
(*Ying Wa College*)
- Hon. Treasurer:** Mr. Lee Hing Yiu
(*Aberdeen Technical School*)
- Members:** * Mr. Chan Shek Yuen
(*Delia Memorial School (Hip Wo)*)
Ms. Chau Siu Hung
(*Maryknoll Convent School*)
Ms. Cheng Wai Sim
(*Heep Yunn School*)
Mr. Cheung Hoi Ying
(*Kwun Tong Government Secondary School*)
Mr. Cheung Wai Ching
(*King Ling College*)
Mr. Kwok Kin Kee
(*Rosaryhill School*)
Mr. Lee Kai Chiu
(*YCH Wong Wha San Secondary School*)
Mr. Leung Chi Shing
(*TWGHs Lee Ching Dea Memorial College*)
Mr. Poon Ka Hang
(*Pui Ching Middle School*)
Mrs. Siu Chow Sau Wah
(*St. Stephen's College*)
Mr. Wong Chiu Keung
(*Hong Kong True Light College*)
Mr. Yip Hon Keung
(*Diocesan Boys' School*)
Mr. Yu Po Hing
(*Kowloon True Light Middle School*)
Ms. Lee Wai Chi
(*Hoi Ping Chamber of Commerce Secondary School*)
Ms. Wu Cheuk Lam
(*Fukien Secondary School*)

* Retired as from 1.9.2011

[^] Resigned as from 1.9.2011

Assume duty as from 1.9.2011

NOTICE OF GENERAL SPORTS MEETING

Date: Friday, 2nd September, 2011

Place: Lecture Hall, Hong Kong Science Museum, 2 Science Museum Road,
Tsim Sha Tsui East, Kowloon.

Time: 2:00p.m.

Member Secondary Schools wishing to participate in the 2011/2012 Inter-School Sports Competition **MUST** make sure that they are represented at this meeting. Such representatives **must be teachers of the school** concerned and they must be given authority to represent their schools in matters relating to Inter-School sports competition. All representatives attending this General Sports Meeting must be prepared to be elected as Sports Convenors for the 2011/2012 season. Schools which have no representative at the meeting without acceptable reason shall not be allowed to take part in any secondary schools sports in the 2011/2012 season.

AGENDA

1. Opening remarks by Mrs. Stella Lau, JP, Chairlady of the HK Island and Kowloon Secondary Schools Regional Committee;
2. Explanation of student registration procedure and system;
3. Explanation of system of sports competition;
4. Election of Sports Convenors;
5. Demonstration of Online Sports Entry System for the 2011/2012 season

SPORTS ENTRIES

Entries for various sports will be applied via Online Sports Entry System (<http://sportsentry.hkssf.org.hk>). An assigned login name and a computer generated password (reset is required for first time login) will be provided to all school members at the General Sports Meeting. There will be one closing date for all team entries; online sports entry together with the appropriate entry fees should reach the Federation office by **Friday, 9th September, 2011**.

Heads of member schools should consult their sportsmasters/sportsmistresses or teachers-in-charge of different sports to decide on the Sport/s and Grade/s which they wish to enter in the 2011/2012 season.

This arrangement will provide considerable administrative convenience to the Federation for the planning of the season, especially the booking of sports facilities for various competitions. This will also facilitate member secondary schools as they would know how many sports they have been committed to at the beginning of the sports season.

Schools wishing to participate in the Inter-School Swimming Championships are advised to submit the online sports entry as soon as possible. Details concerning Inter-School Swimming, including forms for entering individual competitors will only be mailed to participating schools after receipt of the online sports entry.

SPORTS MANAGEMENT COMMITTEES

1. Each sport shall be organised and conducted by a Management Committee elected by representatives of schools participating in that sport. The Management Committee should comprise of a convenor, a secretary and such other members as are necessary. Officer of the Education Bureau may also serve as member of Management Committee. The terms of office for convenors and for secretaries shall be one year.
2. In ball games and racket games, when competitions are organised in more than one division, the Division One Convenors of these sports may, at their own discretion, appoint Division Two and/or Division Three Convenors from their own Management Committees to assist them in the running of these sports.
3. Schools wishing to participate in Inter-School sports must nominate at least one teacher to stand for election of sports Convenors. The HK Island and Kowloon Secondary Schools Regional Committee will prepare a possible list of Convenors to put forward to the General Sports Meeting of participating schools in September for election.
4. Schools wishing to participate in secondary school competition in the HK Island and Kowloon region must be represented by a teacher representative at the General Sports Meeting of participating schools. Schools which have no representative at the General Sports Meeting without acceptable reason shall not be allowed to take part in any secondary school sports in that Federation year.
5. Schools entering a sport must nominate one teacher who is willing to serve in the Sport Management Committee. Teachers nominated shall have some knowledge of the sport concerned. Members of the Management Committee shall be appointed by the Secretary of the HK Island and Kowloon Secondary Schools Regional Committee and the convenors of the sports.
6. School refuses to nominate a teacher to serve as convenor or a member of a particular Sport Management Committee when required will automatically not be allowed to take part in that particular sport.
7. **POWERS AND DUTIES:**
 - 7.1 To implement the policy as laid down by the HK Island and Kowloon Secondary Schools Regional Committee. With the approval of the HK Island and Kowloon Secondary Schools Regional Committee to make regulations for sports competition.
 - 7.2 In consultation with the HK Island and Kowloon Secondary Schools Regional Committee to uphold, reverse, or modify any decision made by the officials.
 - 7.3 To interpret the Federation rules governing particular sports and ensure proper conduct of officials, competitors and spectators of member secondary schools.
 - 7.4 To consider and decide on matters of immediate importance brought up by participating schools.
 - 7.5 To receive reports from officials.

SYSTEM OF COMPETITION

1. A Division system, with a maximum of three divisions, will be adopted for all sports conducted by the HK Island and Kowloon Secondary Schools Regional Committee. Schools will be placed in divisions by the Regional Committee based on performance in the previous season. Schools participating for the first time or rejoin after a period of absence will be placed in the lowest division.
2. If a school, after being allotted to a higher division in a sport, does not enter in that sport without reason acceptable to the HK Island and Kowloon Secondary Schools Regional Committee, such school will not be allowed to participate in that sport for a maximum of the following 2 seasons. This rule will also be applied to schools in Division Two of a sport if that sport has 3 divisions competition.

3. PROMOTION AND RELEGATION SYSTEM

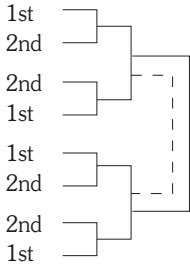
Unless otherwise stated,

- 3.1 The first and second schools in Division 2 will be promoted to Division 1.
 - 3.2 The last and second last schools in Division 1 will be relegated to Division 2.
 - 3.3 The first and second schools in Division 3 will be promoted to Division 2.
 - 3.4 The last and second last schools in Division 2 will be relegated to Division 3.
 - 3.5 When Division Two or Three competition has to be further split into areas because of large number of entries, the first school in each area competition will be promoted. Under such circumstances, same number of schools in the corresponding higher division will be relegated.
4. In order to determine ranking of each school in each sport, the following points scoring system will be used:-

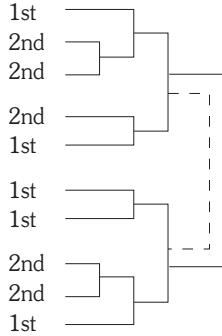
4.1	Position	A Grade	B Grade	C Grade
	Champion	18	18	18
	Second	14	14	14
	3rd	12	12	12
	4th	10	10	10
	5th	8	8	8
	6th	6	6	6
	7th	4	4	4
	8th	3	3	3
	9th	2	2	2
	10th	1	1	1
	11th & below	0	0	0

- 4.2 In the case when a competition is separated into first round and final round, the positions of non-qualifying team in the first round will be placed immediately after the last team in the final round. When teams tie in a position, overall points for the place for which they tie will be awarded to each team in full.
- 4.3 The total points scored by all 3 grades will then be used to rank each school for promotion and relegation.
- 4.4 The above points scoring system will not apply to Athletics and Swimming as these sports already have a points scoring system based on individual results to determine team and school ranking.
- 4.5 Schools tying for points will be awarded the same position.
- 4.6 In case of tie on points that affect promotion and relegation, the following criteria are used:-
 - 1) A school with higher number of teams entered in the competition will be placed in a higher position. Should the tie persist; then

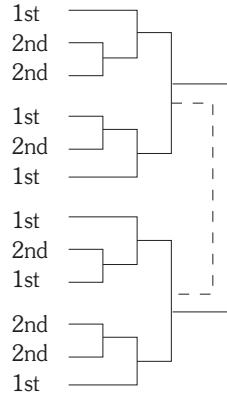
(Four Groups)



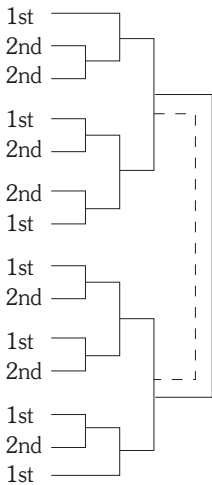
(Five Groups)



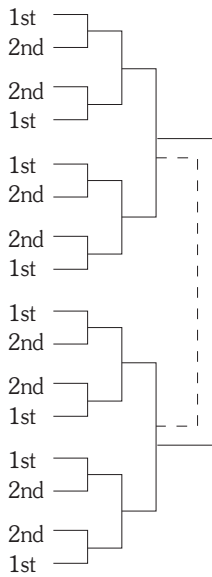
(Six Groups)



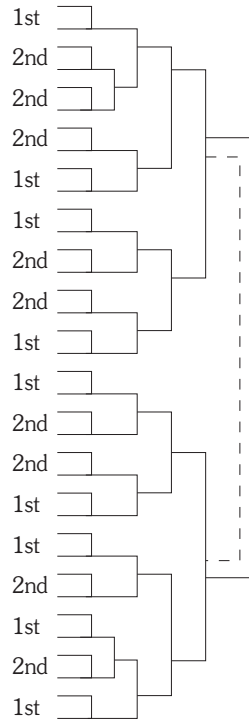
(Seven Groups)



(Eight Groups)



Nine Groups (18 Teams)



5.4 Should a school give a walk over in the knock out stage, the school will be eliminated and debarred from further participation in that stage. No award will be given to the school but overall points/Bauhinia Bowl Award points equivalent to the achieved lowest position in the knock out stage will be given to the school. However, this will not apply to those schools which deliberately give a walk over and fail to notify the Management Committee.

GENERAL RULES OF SPORTS COMPETITION

1. Competition Starting Time

- 1.1 Teams shall be properly dressed and have their team/score sheets filled in before the scheduled time of the match. If any team is not ready to start at the scheduled time, the referee may declare a walk-over.
- 1.2 Members of a team cannot be changed when a match has been started unless otherwise specified in official rules of respective competitions.

2. Registration Card

- 2.1 No player shall be allowed to play if he/she fails to produce his/her valid student registration card before the start of a match.
- 2.2 Before the start of a match, the staff member-in-charge must hand in all the registration cards to the referee, who will keep them until the end of the match.
- 2.3 Members of the Management Committee have the right to check registration cards at any time.

3. Discipline

- 3.1 Each team shall be accompanied by a staff member of the school, or an authorized member appointed by Head of school. He / she shall remain with the team until the end of the match.
- 3.2 The staff member shall be responsible for the conduct of his/her team members and supporters both on and off the field.
- 3.3 The staff member of the first named team on the fixture will be the duty officer of the match to deal with problem that may arise. The staff member shall report to the Federation Office in event of any special case.
- 3.4 The staff member, or the authorized member must report to the referee before the start of a match.

4. Fixtures

- 4.1 Fixtures lists will be sent at least 7 days in advance whenever possible.
- 4.2 Games can be scheduled during holidays.
- 4.3 No postponement will be entertained.

5. Representation in Interport/International Schools Sports Competition

Any school with player and/or teacher selected to represent Hong Kong School in Interport/International competition organised by the Federation shall not be scheduled any fixture for that particular sport when the player and/or teacher is not in Hong Kong.

6. Inclement Weather

6.1 General

- 6.1.1 In the event of the public announcement by the Education Bureau that all schools are to be closed because of adverse weather (e.g. typhoon, rainstorm), all competitions on that day will be cancelled automatically.
- 6.1.2 All competitions will also be cancelled automatically whenever typhoon signal No.3, red rainstorm warning or other higher warning signal is hoisted.
- 6.1.3 However, if matches have been started, the duty officer and the referee will decide whether or not the matches will continue. In the case of any cancellation, the Federation will rearrange postponed fixtures accordingly.
- 6.1.4 All competitions will be cancelled automatically when the air pollution index reaches 201 or above.
- 6.1.5 Staff member, referee and player should refer to the HK Observatory weather report as indication; 6:30 a.m. for before noon competition; 11 a.m. for afternoon competition.

6.2 Outdoor

- 6.2.1 All outdoor ball game matches will be cancelled automatically when amber rainstorm warning or other higher warning signal is hoisted.

- 6.2.2 All OUTDOOR VOLLEYBALL matches will be cancelled automatically whenever any typhoon signal is hoisted.
- 6.2.3 In the event of wet weather, participating teams playing in OUTDOOR COURTS must report to the competition centres. The referee and the duty officer will decide postponement on the fitness of ground condition before the start or during the course of a match. In case of heavy rain, schools may enquire the Federation office at 3:00pm (weekdays) and 9:00am (Saturday).

7. Team Colour

- 7.1 Teams playing in body contact match must wear distinctive colour vests for easy identification. Please refer to respective general rules for regulation on uniform.
- 7.2 Schools entering in Inter-School Football & Handball Competition are requested to supply a list of colours of their teams in early September. Special rules on Team colour for Basketball Competition have been stated in the General Rules of Inter-School Basketball Competition. Team colour lists for Football & Handball will be compiled and circulated to all participating schools prior to the commencement of competition.
- 7.3 Schools should supply one colour only per grade. In the case of multi colour shirt, only the main colour should be reported. If any school supplies two colours per grade, the Federation office will choose, by random, one colour to be included in the team colour list.
- 7.4 Teams should wear the colour as indicated in the team colours list, otherwise they will be responsible in the event of clash of colour.
- 7.5 Schools wishing to change their colour after the team colour lists have been compiled are requested to notify the Federation office in writing at least 2 days before the commencement of competition. The schools are also responsible to notify their opposing teams.
- 7.6 The Home Team (the first named team on the fixture) of a match must check the colour of the away team. In case of clash of colour, the Home Team shall change, failing which will lead to walk-over.
- 7.7 In the case when a team fails to supply team colour, a question mark(?) will be indicated in the team colour list. The school will be responsible to change when there is a clash of colour even though the team is not the Home Team of the match, failing which will lead to walk-over.
- 7.8 In the case when both teams fail to supply team colour and there is a clash of colour, either team must change before the official time, failing which will lead to walk over to both teams.
- 7.9 In the case when a team not wearing the colour as indicated in the team colour list and subsequently leading to the clash of colour, the school will be responsible to change, failing which will lead to walk-over.
- 7.10 In the case when two teams not wearing the colours as indicated in the team colour list and subsequently leading to the clash of colour, then both teams are responsible. If either team cannot change its colour, both teams will be disqualified.
- 7.11 In case of similar colour, the referee will decide by lots drawing a team to change its colour.

8. Competition Venue

Matches will be conducted in public venues. However, participating schools must be prepared to release their courts for competition when required.

9. Number of Participating Team

- 9.1 In general, a school may enter one team in a grade. However, a school may enter more than one team in Girls Hockey and Netball.
- 9.2 If the number of schools entered in any grade in a sport is less than 2 teams, then the competition of that grade will be cancelled.
- 9.3 Schools wishing to drop out from competition must inform the Federation Office as early as possible with sufficient reason. The Management Committee will, if necessary, before the commencement of competition, redistribute schools into another groups in order to maintain a balanced number of teams in different groups.

10. Staff Member-in-charge

In view of heavy workload of teachers and staff of schools, the Secondary School Sports Council has relaxed the requirement of a Team Manager as follows:-

- Apart from staff member (staff member equivalents to full time staff employed by school), Head of school may appoint responsible adult to take up the role of staff member. He/she will be authorized to be team manager who accompany and remain with the team throughout the entire match/competition.
- Responsible adult must be officially appointed by the Head of School. The following conditions should be observed:-
 - The person must be aged 18 or over, (According to the Group Personal Accident Scheme, only those aged 70 and under will be covered)
 - The person must not be a current secondary school student,
 - The person cannot serve as team manager of two competing teams in the same match,
 - Schools must complete appropriate application procedure three days before the person assumes the duty of team manager.

11. Trophy, Medal and Certificate

11.1 The HKSSF Logo is subject to copyright of all rights reserved. Should there be any loss of medals, no replacement is allowed unless with the approval of the Federation / Regional Committee.

11.2 Maximum number of medals and certificates shall be issued to winning schools / teams according to the specificity of respective sports with details as follows:

Team

Event	Division	Trophy	Medal				Certificate
			Gold	Silver	Bronze	Black	
Athletics	ALL	1	0	0	0	0	0
Badminton	ALL	1	9	9	9	9	9
Basketball	ALL	1	12	12	12	12	12
Beach Volleyball	ALL	1	4	4	4	4	4
Cross Country	D1	1	8	8	8	8	8
	D2	1	8	8	8	8	8
	D3 Boys	1	6	6	6	6	6
	D3 Girls	1	6	6	6	6	6
Fencing	ALL	1	5	5	5	5	5
Football	ALL	1	20	20	20	20	20
Handball	D1 Boys	1	14	14	14	—	14
	D2 Boys	1	14	14	14	14	14
	Girls	1	14	14	14	14	14
Netball	ALL	1	14	14	14	14	14
Hockey	ALL	1	16	16	16	16	16
Rugby	ALL	1	20	20	20	20	20
Squash	Boys	1	7	7	7	7	7
	Girls	1	5	5	5	5	5
Swimming	ALL	1	0	0	0	0	0
Table Tennis	ALL	1	5	5	5	5	5
Tennis	D1	1	8	8	8	—	8
	D2	1	8	8	8	8	8
Volleyball	ALL	1	12	12	12	12	12

* If 8 or less teams, only top 3 position will be awarded.

Individual / Relay

Event	Ind / Relay	Prize	Position			
			1st	2nd	3rd	4th
Athletics	Individual	Medal	1	1	1	1
		Certificate	1	1	1	1
	Relay	Medal	6	6	6	6
		Certificate	4	4	4	4
Cross Country	Individual	Medal Certificate	* Medal & Certificate will be awarded to top 10 winners			
Fencing	Individual	Medal	1	1	1	1
		Certificate	1	1	1	1
Squash	Individual	Medal	1	1	1	1
		Certificate	1	1	1	1
	Individual	Medal	1	1	1	1
		Certificate	1	1	1	1
Swimming	Individual	Medal	1	1	1	1
		Certificate	1	1	1	1
	Relay	Medal	6	6	6	6
		Certificate	4	4	4	4

11.3 Apply for reissue certificate

- 11.3.1 Applicant must provide correct information and return the incorrect certificate for any reissue of certificate in the present academic season; reissue will only be free of charge if such information is correctly provided by school; otherwise each certification letter will be charged HK\$30.00 as administration fee.
- 11.3.2 No certificate will be issued for previous seasons. Applicants can only apply for certification letter.
- 11.3.3 Application form for the certification letter can be downloaded at the HKSSF Website. Each certification letter will be charged HK\$50.00.
- 11.3.4 Applicant shall pay the fee when collecting the certification letter in person or by his / her authorized representative (with authorized document) at the secretariat office.

STUDENT REGISTRATION PROCEDURE AND SYSTEM

The following student registration procedure and system are applicable to students of member secondary schools in the HK Island and Kowloon region.

1. THE APPOINTMENT:

Application forms for appointment (date & time) of registration of students should be forwarded to the HK Island and Kowloon office of the Federation and the office will arrange registration officers to go to schools for student registration. Form must be returned to the Federation Office not later than Wednesday 31st August, 2011.

2. REGISTRATION:

2.1 There will be two visits for each member school. The first visit will be from 14th September to 28th October 2011. The second visit will be from 4th January to 2nd March 2012. Schools are advised to register as many students as possible during these visits.

2.2 Any other appointment for registration will only take place in the Federation office provided that notification must be given 2 days in advance.

2.3 Priority will be given to schools entering in Swimming.

3. THE REGISTRATION FORMS AND CARDS:-

3.1 Registration forms and cards can be obtained from the Federation office, Room 203, 1st Floor, 7 Carmel Village Street, Homantin, Kowloon (1 form for 4 students).

3.2 Registration forms and cards **MUST BE PREPARED BEFORE THE REGISTRATION TAKES PLACE**. All information required must be supplied. They must be **SIGNED PERSONALLY** by the school teacher responsible for student registration and the Head of School or his/her representative.

3.3 Head of School may designate someone on his/her behalf to sign the registration forms. The authorized signature should be forwarded to the Federation office not later than Wednesday 31st August 2011.

4. SCHOOL TEACHER RESPONSIBILITIES:-

4.1 Teacher-in-charge of registration should prepare two **RECENT** identical photos (38mm H x 34mm W) of each boy/girl being registered. One of the photos should be glued on the registration form and the other to be put on the registration card. Registration Officers will not accept the boy/girl for registration if they are not satisfied with the photos. Photocopy will not be accepted.

4.2 Teachers-in-charge of student registration **MUST BE PRESENT** during registration. All registration documents should be checked & registration forms & cards duly completed before registration takes place.

4.3 **STUDENT WILL NOT BE REQUIRED TO BE PRESENT** during registration unless requested by registration officer. This will make the arrangement more convenient to both teacher & students being registered. However, registration officer may request students to appear in person if any queries arise during registration.

5. DUPLICATE CARDS:-

A duplicate card will be issued at HK\$10.00 per card. A duplicate card will be marked DUPLICATE and claims for duplicate cards must be accompanied by a letter from the Head of School to certify that the original Registration Card is lost. Duplicate card can only be issued in the Federation office.

6. THE DOCUMENTS:-

6.1 To prove the date of birth of the boy/girl being registered, the ORIGINAL copy of one of the following documents must be produced:-

- (i) HK Identity Card or Personal Identification document bearing date of birth and photo issued by Government Department concerned; or
- (ii) Travel Document or Passport; or
- (iii) Past Student Membership Registration Card (2009-2010 season or after)

6.2 Photocopies:-

6.2.1 Photocopy of Item 6.1 (i) & (ii) will be accepted as valid document provided that

- (i) The photocopy is copied from the original document
- (ii) The face, name and date of birth of the students are clearly visible, and

6.2.2 The photocopy of a student's identification document should be stuck/clipped on the left hand side of the registration form next to the data of the student.

6.2.3 The Head of school will sign on the registration form to certify that data and photocopies are true and correct.

6.2.4 The photocopies will be kept in the Federation office for reference till the end of the sport season.

6.2.5 The use of photocopies is strictly voluntary. Schools and students may at any time choose to produce original document for checking.

6.2.6 The information provided will be used solely for the purpose of student registration.

7. COLLECTION OF REGISTRATION CARDS

7.1 After checking relevant document, registration officer will issue registration cards to school. The teacher-in-charge of registration will be required to sign a slip certifying the number of students being registered. The Federation office will then issue a debit note to the school for collection of appropriate fee.

7.2 Registration fee is HK\$10.00 per student including the premium for the Group Student Personal Accident Insurance Policy.

8. SECURITY

8.1 Registration Card is non-transferable.

8.2 Registration Card is only valid with official student registration chop and authorized signature.

8.3 Photo and description on the card should not be altered.

8.4 Registration card is a very important document and should be kept in a secure place.

8.5 Registration card should be put into the protective holder as provided to avoid unnecessary damage.

9. COLOUR OF REGISTRATION FORMS & CARDS:

Boys A - Purple	Girls A - Green
Boys B - Yellow	Girls B - Blue
Boys C - Pink	Girls C - Orange

10. AGE RESTRICTION:

- A Grade - Under 20,
Date of birth: On or after 1st January 1992
- B Grade - Under 16,
Date of birth: On or after 1st January 1996
- C Grade - Under 14,
Date of birth: On or after 1st January 1998

11. PARTICIPATION

- 11.1 Students holding A grade card may only take part in A grade competitions.
- 11.2 Students holding B grade card may only take part in B grade competitions.
- 11.3 Students holding C grade card may only take part in C grade competitions.
- 11.4 When a sport is organised as an 'open grade', student holding A, B or C grade card may take part in the competition.
- 11.5 When a sport is organised in A grade and B grade competition, student holding 'C' grade card may take part in 'B' grade competition.
- 11.6 When a sport is organised in combined AB grade competition, student holding A, B grade card may take part in the competition.

12. RE-REGISTRATION

- 12.1 A registered student may be allowed to re-register into another grade provided that
- (i) the student has not taken part in any Inter-school sport competition in that Federation year, or
 - (ii) the student has only taken part in open grade competition in that Federation year, and
 - (iii) (i) & (ii) are certified by Head of School in writing.
- 12.2 Re-registration will only be done in the Federation office.
- 12.3 A fee of HK\$10.00 will be charged per card.

13. ANTI-DOPING

The card holder should comply with all applicable anti-doping policies and rules adopted pursuant to the world anti-doping code.

14. STUDENT REGISTRATION REGULATIONS

Please refer to By-Laws & Rules Article I Registration of Members

HK Island and Kowloon Secondary School Sports Calendar 2011/2012

Sport	Date	Time	Venue
Archery	21 & 25 May, 2012	8:00am-2:00pm	Wong Chuk Hang Sports Centre
Athletics	Div. I 16, 21 & 24/2/2012 Div. II 13, 17 & 22/2/2012 Div. III (Area 1) 2, 7 & 10/2/2012 Div. III (Area 2) 3, 8 & 14/2/2012 Div. III (Area 3) 15, 20 & 23/2/2012 Div. III (Area 4) 1, 6 & 9/2/2012 Reserved Dates: 29/2, & 2, 7/3/2012	8:00am-6:00pm	Wanchai Sports Ground
X-Country	Div. I 14/11/2011 Div. II 24/11/2011 Div. III (Area 1) 16/11/2011 Div. III (Area 2) 17/11/2011 Div. III (Area 3) 23/11/2011 Individual Tournament: # 19/11/2011 League: # 20/11/2011	12:00nn-5:00pm 9:00am-2:00pm 9:00am-2:00pm 9:00am-2:00pm 9:00am-2:00pm	Hong Kong Golf Club Aberdeen Reservoir Aberdeen Reservoir Aberdeen Reservoir Aberdeen Reservoir
Fencing	Individual Tournament: # 19/11/2011 League: # 20/11/2011	9:00am-8:00pm	To be confirmed
Indoor Rowing	11 & 12 May, 2012	9:00am-7:00pm	Harbour Road Sports Centre
Swimming	Div. I 14 & 27/10/2011 Div. II 13 & 19/10/2011 Div. III (HK) 28/9 & 6/10/2011 Div. III (K1) 29/9 & 7/10/2011 Div. III (K2) 3 & 9/11/2011	8:00am-6:00pm	Kowloon Park Swimming Pool
Squash	Individual Tournament: 8, 9, 15 & 16/10/2011 League: May 2012	9:00am-9:00pm	Hong Kong Squash Centre

Tentative schedule, subject to venue availability

The following information can only show a general idea on the competition period of respective sports. Details will be sent to schools concerned after the first meeting of respective sports management committees.

Sport	Date	Time	Venue
Badminton	October to April (Weekdays) (Sat)	3:00pm-7:00pm 8:30am-6:00pm	Sports Centres
Basketball	October to April Marathon Tournament July, 2011	4:00pm-7:00pm 8:30am-6:00pm 9:00am-6:00pm	Member Schools, Public Grounds & Sports Centres Harbour Road Sports Centre
Beach Volleyball	October to December (Weekdays) (Sat & Sun)	4:00pm-8:00pm 8:00am-8:00pm	Choi Hung Road Beach Volleyball Court Kwai Chung Sports Ground
Football	October to May (Weekdays) (Sat) (Sun)	1:00pm-6:00pm 8:00am-6:00pm 8:00am-2:00pm	Public Grounds
Handball	October to April (Sat & Sun)	9:00am-6:00pm	Public Grounds & Sports Centres
Hockey	October to April (Weekdays)	4:30pm-6:00pm	King's Park, Happy Valley & Boundary Street Recreation Ground Hockey Pitches
Netball	September to March (Weekdays) (Sat)	After School 1:00pm-6:00pm	Fa Hui Playground & Aberdeen Sports Ground
Rugby	September to March (Weekdays) (Sat)	4:30pm-6:00pm 9:00am-12:00pm	Tai Hang Tung and Happy Valley Rugby Pitches
Table Tennis	October to April (Sat & Sun)	8:00am-6:00pm	Sports Centres
Tennis	October to April (Wed) (Sat)	4:00pm-6:00pm 9:00am-2:00pm	Member Schools & Public Grounds
Tenpin Bowling	April (Weekdays)	12:00nn-7:00pm	Mei Foo Bowling World
Volleyball	October to April (Wed) (Sat & Sun)	1:00pm-6:00pm 8:00am-6:00pm	Member Schools, Public Grounds & Sports Centres

SPORTS ENTRY FEES - TEAM

SPORTS	SEX	BOYS			GIRLS		
	GRADE	A	B	C	A	B	C
Athletics		\$110	\$110	\$110	\$110	\$110	\$110
Badminton		\$180	\$180	\$180	\$180	\$180	\$180
Basketball		\$200	\$200	\$200	\$200	\$200	\$200
Beach Volleyball		\$80 (open grade)			\$80 (open grade)		
Cross Country		\$90	\$90	\$90	\$90	\$90	\$90
Fencing		\$90 (open grade)			\$90 (open grade)		
Football		\$200	\$200	\$200	-	-	-
Handball		\$180	\$180	\$180		\$180	\$180
Hockey		\$85 (open grade)			\$85 (per team) (open grade)		
Netball		-	-	-	\$85 (per team)		
Rugby		\$85	\$85	\$85	-	-	-
Squash		\$150 (open grade)			\$150 (open grade)		
Swimming		\$110	\$110	\$110	\$110	\$110	\$110
Table Tennis		\$110	\$110	\$110	\$110	\$110	\$110
Tenpin Bowling				\$80 (open grade)			
Tennis		\$110 (open grade)			\$110 (open grade)		
Volleyball		\$180	\$180	\$180	\$180	\$180	\$180

SPORTS ENTRY FEES - INDIVIDUAL

Sports	Entry Fee Per Participant
Archery	\$20
Fencing	\$70
Squash	\$120

Events for all Hong Kong Secondary Schools

Event	Date	Venue
Softball	October - December 2011	Shek Kip Mei Service Reservoir Playground / Tin Kwong Road Softball Field
Life Saving	21/11/2011	Kowloon Park Swimming Pool
Gymnastics	March - April 2012	Kowloon Park Sports Centre
Football (Girl)	November 2011 - onwards	LCSD Hard-Surface Soccer Pitches

All Hong Kong Schools Jing Ying Tournaments

(1) Information of the Tournaments

1.1 Competition Schedule (Tentative)

Event	Date	Venue
Table Tennis	25 Sep 2011 (Sun)	Choi Hung Road Sports Centre
	1 Oct 2011 (Sat)	Choi Hung Road Sports Centre
	15 Oct 2011 (Sat)	Choi Hung Road Sports Centre
	20 Oct 2011 (Thu)	Luen Wo Hui Sports Centre
Cross Country	26 Nov 2011 (Sat)	Yuen Long Tai Tong Country Park
Badminton	6 Nov 2011 (Sun)	Tsuen Wan West Sports Centre
	3 Dec 2011 (Sat)	Tseung Kwan O Sports Centre
	4 Dec 2011 (Sun)	Tseung Kwan O Sports Centre
	10 Dec 2011 (Sat)	Tseung Kwan O Sports Centre
Basketball	19 Dec 2011 (Mon)	ORSM Sports Centre
	20 Dec 2011 (Tue)	
	21 Dec 2011 (Wed)	
	22 Dec 2011 (Thu)	
	23 Dec 2011 (Fri)	
Volleyball	27 Dec 2011 (Tue)	Tsing Yi Sports Centre
	28 Dec 2011 (Wed)	
	29 Dec 2011 (Thu)	
	30 Dec 2011 (Fri)	
	31 Dec 2011 (Sat)	
Handball	April-May 2012	To be confirmed
Football	12 Feb 2012 (Sun)	Happy Valley Recreation Ground (2,3,4)
	19 Feb 2012 (Sun)	
	26 Feb 2012 (Sun)	Happy Valley Recreation Ground (2)
	1 Mar 2012 (Thu)	Sham Shui Po Sports Ground
	11 Mar 2012 (Sun)	Sham Shui Po Sports Ground

1.2 Eligibility for Participation

Event	Category	No. of Teams	Eligibility
Table Tennis	Boys & Girls (Singles & Doubles)	-	Member schools may select their best athletes to participate in the Tournaments
Badminton	Boys & Girls (Singles & Doubles)	-	
Cross Country	Boys & Girls	-	
Basketball	Boys Girls	24 24	2 teams each from the six ACs of NT* plus 12 teams from the HKSSRC**
Volleyball	Boys Girls	24 24	
Football	Boys	24	
Handball	Boys Girls	16 16	~ 6 champion teams from respective ACs of NT ~ 6 teams from the HKSSRC ~ 4 teams assigned to the respective Division of HKSSRC and ACs of NT basing on the result of last year's Tournament. i.e. top 4 positions

* ACs of NT = Area Committees of New Territories

** HKSSRC = Hong Kong Island and Kowloon Secondary Schools Regional Committee

1.3 All Tournaments will be competed in Open Grades.

1.4 Respective Sport Management Committee of the HKSSRC will decide the selection criteria.

1.5 Points will be scored towards the "Outstanding School Award in Jing Ying Team Competition" as follows:

1.5.1 The schools achieving the highest number of points in the games will be awarded in Boys and Girls section and only performance in Basketball, Football, Handball and Volleyball Jing Ying Tournaments shall count.

1.5.2 Scoring System: All participating schools will receive one additional point

Position	1st	2nd	3rd	4th	5th - 8th	9th - 16th	17th - 24th
Points	8	6	5	4	3	2	1

1.5.3 If there are two third places in the Tournament, the total scores of 3rd and 4th positions will be divided by two and each school will receive 4.5 points.

1.5.4 In case of tie on total scores, the school with greater number of champions will be placed in higher position. Should the tie still persist, number of runners-ups should be counted and the same applies thereafter.

(2) Criteria of Seeding Arrangement

(All Technical and Selection Sub-committees have the right to make the final decision)

2.1 Table Tennis

2.1.1 Singles Event - according to the following sequences:

- i. Ranking top 8 positions of singles event of last year's Tournament.
- ii. Ranking top 8 positions of singles event (U21) of Hong Kong Table Tennis Association (HKTTA)*
- iii. Ranking 9th-16th positions of singles event of last year's Tournament.
- iv. Ranking first 50 positions of singles event (U21) of HKTTA.*

Remarks: 1. Players who promote from primary section to secondary section take **NO** consideration of their last year's result.

2. Players who belong to the same school will be allocated separately in upper and lower tiers by lots drawing.

2.1.2 Doubles Event - according to the following scenarios:

- i. If the composition is the same as last year,
 - a) Ranking top 8 positions of doubles event of last year's Tournament.
 - b) Ranking first 30 positions of doubles event of HKTTA
- ii. If the composition is different from last year (counting the higher from the total scores of the 2 players)
 - a) Ranking top 16 positions of singles event of last year's Tournament.
 - b) Ranking first 50 positions of singles event (U21) of HKTTA*

Remark: No seeding will be arranged if no team meets the criteria.

Note: * *Ranking of HKTTA Singles Event (U21) (counting to the nearest date of 1 September 2011).*

2.2 Badminton

2.2.1 Singles Event - according to the following sequences:

- i. Ranking top 8 positions of singles event of last year's Tournament.
- ii. Ranking 9th-16th positions of singles event of last year's Tournament.
- iii. Ranking top 8 positions of singles event (Open Grade of Hong Kong Badminton Association (HKBA)
 - a) BOCHK HK Annual Badminton Championships 2011
 - b) BOCHK HK Youth Badminton Championships 2011

Remarks: 1. Players who promote from primary section to secondary section take **NO** consideration of their last year's result.

2. Players who belong to the same school will be allocated separately in upper and lower tiers by lots drawing.

2.2.2 Doubles Event - according to the following scenarios:

- i. If the composition is the same as last year: ranking top 8 positions of doubles event of last year's Tournament.
- ii. If the composition is different from last year (counting the higher scores of the 2 players)
 - 1) Ranking top 16 positions of singles event of last year's Tournament.
 - 2) Ranking top 8 positions of singles event (Open Grade of HKBA)

a) BOCHK HK Annual Badminton Championships 2011

b) BOCHK HK Youth Badminton Championships 2011

Remark: No seeding will be arranged if no team meets the criteria.

2.3 Basketball, Volleyball and Football (24 teams -12 teams each from HKSSRC and ACs of NT)

2.3.1 8 seeding places evenly allocated to HKSSRC and 6 ACs of NT

2.3.1.1 For HKSSRC

~ Basketball: Top 2 teams each from HK Island and Kowloon Regions of current year Division I competition, be seeded with reference to last year's Jing Ying Tournament result. Should any seeding teams withdraw from the competition, the seeding place will be substituted by the subsequent team(s) in the same Division. The teams of the same Region will be evenly drawn to compete in upper and lower tiers.

~ Volleyball and Football: Top 4 teams of current year Division I competition be seeded. Should any seeding teams withdraw from the competition, the seeding place will be substituted by the subsequent team(s) in the same Division.

2.3.1.2 For ACs of NT

4 out of the Champion teams of the 6 respective Area Committees be seeded basing on the top 8 positions of last year's Jing Ying Tournament, otherwise, lots drawing be arranged. Should any seeding teams withdraw from the competition, the seeding place will be substituted by the subsequent team(s) in the same A/C.

2.3.2 Besides the 8 seeding places, the other places will be evenly allotted to the teams of HKSSRC and 6 ACs of NT by lots drawing.

2.3.3 Teams from the HKSSRC and ACs of NT will try to be allotted to compete with each other in the first round competition.

2.3.4 Teams from the same divisions or areas will be allotted to compete separately in upper and lower tiers of the knock out table.

2.4 Handball

2.4.1 4 seeding positions will be allotted to the respective Division of HKSSRC and ACs of NT basing on the result of last year's Jing Ying Tournament.

2.4.2 Allocation will then be arranged according to the current year's inter-school competition result of respective Division of HKSSRC and ACs of NT.

2.4.3 The Champion teams of the HKSSRC and ACs of NT should be avoided to compete with each other in the first round competition.

2.4.4 Teams from the HKSSRC and ACs of NT will probably be drawn to compete with each other in the first round competition.

2.4.5 Teams from the same divisions or areas will be probably allocated to compete separately in upper and lower tiers.

Schools Interport Championships

(1) Competition Schedule (Tentative)

	Event	Category	Date	Venue
1.	Table Tennis	Boys & Girls	25-28 / 11 / 2011	Fujian
2.	Football	Boys	2-5 / 12 / 2011	Macau
3.	Basketball	Boys & Girls	30 / 3 - 2 / 4 / 2012	Guangdong
4.	Athletics	Boys & Girls	27-30 / 4 / 2012	Hong Kong

- (2) Schools Interport Championships are organized in turns by Guangdong, Fujian, Macau and Hong Kong. A total of 4 events will be held annually.
- (3) Our Technical and Selection Sub-committee panels of each sport will select outstanding athletes from respective Jing Ying Tournaments or by selection in forming the Hong Kong School Teams. Details of the selections will be notified to all member schools at a later stage.

Schools Interport (Hong Kong and Macau) Competitions

(1) Information of the Competitions

- 1.1 Schools Interport Competitions which includes Hockey and Handball are organized in turns by Hong Kong and Macau. 1 event will be held annually and 2 other primary schools competitions will be held on the same day.

1.2 Competition Schedule (Tentative)

	Event	Category	Date	Venue
1.	Hockey (Sec.)	Boys	21 / 4 / 2012	Hong Kong
2.	Table Tennis (Pri.)	Boys & Girls		
3.	Football (Pri.)	Boys		

- (2) Our Technical and Selection Sub-committee panels of each sport will select outstanding athletes from respective Jing Ying Tournaments or by selection in forming the Hong Kong School Teams. Details of the selections will be notified to all member schools at a later stage.

GENERAL RULES OF INTER-SCHOOL ATHLETICS CHAMPIONSHIPS

Division		Date	Venue
One		16, 21 & 24 / 2 / 2012	Wanchai Sports Ground
Two		13, 17 & 22 / 2 / 2012	
Three	Area 1	2, 7 & 10 / 2 / 2012	
	Area 2	3, 8 & 14 / 2 / 2012	
	Area 3	15, 20 & 23 / 2 / 2012	
	Area 4	1, 6 & 9 / 2 / 2012	

Reserved - 29 / 2 & 2, 7 / 3 / 2012

1. Entries

- 1.1 Each school may enter TWO competitors in each event and ONE team in each of the relay races.
- 1.2 Each competitor may enter TWO individual events and ONE relay race.
- 1.3 Names of competitors in both Chinese and English MUST be submitted to the Federation office on or before the closing date as specified on the entry form.

2. Substitution on the day of competition **will not be considered except in a case supported by doctor's certificate or obvious injuries on the day of the competition**. This will only apply in preliminary round and no substitution may be made for individual finals. However, if an event **is programmed** as a straight final, substitution may be allowed. Substitution may be made in relay finals, as long as the replacement runner has not already run in a relay heat. (see note 2.2)

3. REGISTRATION OF COMPETITORS

Competitors must be registered and must produce their **registration cards** to the officials of the meet. Competitors with no registration card are not allowed to take part in the competition.

4. Participating schools shall, when called upon, provided at least **two PE Teacher officials** for each day of the meet. The Management Committee reserves the right to refuse any school to take part in the competition if the school cannot provide the requisite number of PE teachers officials. If the appointed officials of a school do not turn up in time on the day of the competition, athletes of that school will not be allowed to take part in the competition until the appointed officials report to duty at the Sports Ground. If an official leaves his post and does not return, he/she shall be reported to the HK Island and Kowloon Secondary Schools Regional Committee.

5. REGULATIONS

5.1 **Competition Rules**

All events will be held in accordance with the competition rules of the Hong Kong Amateur Athletic Association as per IAAF unless otherwise specified.

5.2 **Equipment**

5.2.1 The Management Committee will provide equipment for all events including starting blocks. Athletes must not use their own equipment.

5.2.2 Shoes

(A) Ordinary Training shoes or P.E. shoes.

(B) **Spikes Shoes**

The followings are the specification of spikes which are acceptable to be used at Wanchai Sports Ground (Tartan Track)

For Track Events: Tartan spikes maximum length up to 7mm.

For Field Events: Tartan spikes maximum length up to 9mm.

Detailed specification can be obtained from local sport shops.

Any competitor who fails to observe the rules concerning the use of spikes at Wanchai Sports Ground will lead to an automatic disqualification of himself/herself from further participation in this year's Athletics Championships.

5.3 **Competitors Reporting Procedure**

5.3.1 Track event competitors should report to the Marshalling area which is located at the harbour end of the spectator's stand. Field event competitors should report directly to competition area.

5.3.2 Competitors who fail to report to the respective judges within 5 minutes of the FINAL CALL shall be disqualified from that event.

5.3.3 Competitors taking part in a FIELD event who require to leave in the middle of that event to take part in a TRACK event, should obtain a permission slip from the field event judge before the start of competition. The competitors must still ask permission from the field event judge before leaving the field event to report to the **MARSHAL** for the track event with permission slips and registration cards. The field event judges may alter the order of competition in allowing competitors to take their trial first before leaving.

5.3.4 Competitors entering in both TRACK AND FIELD event which start near, or at the same time, should report FIRST for the TRACK event and inform the Marshal that they also enter in the field event concerned. The Marshal will then issue permission slip to competitors concerned.

5.3.5 Competitors are requested to note that the field event will still in progress during their absence. Immediately after the Track event is finished, competitors should report at once to their field event judge.

5.3.6 For High Jump event, competitors can only re-enter the competition at the height from the round in progress. They are not allowed to jump at any previous height. For other field events, competitors can only take their trial from the round that is still in progress when they report to the field event judge. They will forfeit their trial for any round that has already been completed.

5.3.7 If the field event has already been finished and placings of competitors is fixed, competitors that leave the event will forfeit their chance of competing.

5.3.8 Any undue delay on the part of the competitors to report for their event will make them liable to disqualification.

5.4 **Throwing and Jumping Events**

5.4.1 Where in any of the throwing or jumping events the number of competitors is too big, a qualifying round may be held prior to the competition proper at the discretion of the Management Committee.

5.4.2 The first EIGHT (8) competitors shall take part in the final. Tying competitors shall be resolved by comparing the second best performance, or if necessary, the third best, and so on. If second best performance is not available, tying competitors shall both qualify for the final.

5.4.3 Standard points will only be awarded for performances in the first 3 trials of the competition. No standard points will be awarded in the final round.

5.4.4 For Triple Jump only: There will be 2 take off boards/marks (9m, 11m) for triple jump event. In addition, Management Committee may consider, case by case, for allowing competitors to use 7m take off mark.

Competitors should, before the start of their first jump, declare to the officials which take off board/mark they intend to use. Once the decisions are conveyed to the officials, the take off mark will apply to the competitors concerned throughout the competition.

5.5 Track Events

5.5.1 Start

5.5.1.1 A crouch start is necessary in all races up to and including 400 metres.

5.5.1.2 Recall Point - If, in a race not run in lanes, a runner falls during approximately the first 100 meters because of contact with another runner, the race shall be recalled.

5.5.2 Selection for SEMI-FINAL/FINAL

For 100m to 400m

The best times achieved in heat will be qualified to semi-final/final. SEMI-FINALISTS & FINALISTS WILL BE SEEDED IN LANES ACCORDING TO TIME AS FOLLOW:-

(A) Two Semi-Finals:-

SF 1		SF 2	
Lane	Positions according to time achieved in heats	Lane	Positions according to time achieved in heats
1	13	1	14
2	1	2	2
3	4	3	3
4	5	4	6
5	8	5	7
6	9	6	10
7	12	7	11
8	16	8	15

(B) Three Semi-Finals:-

SF 1		SF 2		SF 3	
Lane	Positions according to time achieved in heats	Lane	Positions according to time achieved in heats	Lane	Positions according to time achieved in heats
1	19	1	20	1	21
2	1	2	2	2	3
3	6	3	5	3	4
4	7	4	8	4	9
5	12	5	11	5	10
6	13	6	14	6	15
7	18	7	17	7	16
8	24	8	23	8	22

(C) Final:-

SF 1	
Lane	Positions according to time achieved in heats
1	7
2	1
3	2
4	3
5	4
6	5
7	6
8	8

**(D) Individual Event
(FOR DIVISION ONE ONLY)**

- i. If 18 or less competitors report to the heats, there will be **NO** semi-final, the best 8 times will qualify for final.
- ii. If 19-32 competitors report to the heats, there will be two semi-finals with a maximum of 16 competitors in the semi-finals. The first in each semi-final and the best 6 times will qualify for final.
- iii. No semi-finals for girls 100m, 200m, 400m & hurdles events.

(FOR DIVISION TWO & THREE ONLY)

- i. If 24 or less competitors report to the heats, there will be **NO** semi-final, the best 8 times will qualify for final.
- ii. If 25-40 competitors report to the heats, there will be two semi-finals with a maximum of 16 competitors in the semi-finals. The first in each semi-final and the best 6 times will qualify for final.
- iii. If 41 or more competitors report to the heats, there will be three semi-finals with a maximum of 24 competitors in the semi-finals, The first in each semi-finals and the best 5 times will qualify for final.

5.5.3 For 800m & 1500m

If 17 or more competitors report for the competition then heats will be run. The 12 fastest times will qualify for the final. Girls 1500m is a straight final event.

5.5.4 3000m & 5000m - Straight final.

5.5.5 Relay Races

There will be **NO** semi-final. The best 8 fastest times will qualify for final.

A briefing will be given to all relay runners before the start of each relay event.

5.5.6 Straight finals

If 8 or less competitors, or teams report to the marshalling area for track event (on heat day), the event will be declared a straight final, to be run at time scheduled for that final.

5.6 Lanes in the track events and orders in the field events will be decided by the Management Committee and printed in the programme.

6. TIES: Track Events

If two or more competitors achieving the same time in their heats, where practicable, the tying competitors shall both qualify, failing which the actual time recorded by the competitors to 1/1000th of a second shall be considered. If it is still a tie, lots shall be drawn to determine who shall be placed in the semi-final.

7. TIMING

7.1 Electronic timing system installed in Wanchai Sports Ground will be regarded as the official time.

7.2 In case of electronic timing failing to function properly, then the hand timing will be regarded as the official time for the whole of that particular event.

8. POINTS

Placing:	1st	2nd	3rd	4th	5th	6th	7th	8th
Individual Event:	9	7	6	5	4	3	2	1
Relay races:	18	14	12	10	8	6	4	2

- 8.1 When tying for a position each competitor tying for that position will be credited with an average of points awarded to that position and the position(s) following it.
- 8.2 Standard points shall be counted towards the Grade Championships and Overall Championships of the Athletics Meet. Standard points may only be awarded during heats, unless the events is declared as straight final, in which case standard points may be gained in the final in addition to position points.
Standard point: Individual - 1 point. Relay - 2 points

9. PRIZES

- 9.1 Medals will be awarded to the 1st, 2nd, 3rd and 4th places in each event.
- 9.2 Each relay winning team will be awarded 6 medals and 4 certificates only.
- 9.3 In each grade the winning school will receive the appropriate challenge trophy or shield.
The rest of prizes will follow the standard set by the HK Island and Kowloon Secondary Schools Regional Committee.
- 9.4 Standard Certificate will be awarded to competitors who reached standard in their events.
These certificates will be sent to schools after the Championships.
- 9.5 Certificate of Merit will be awarded to record breakers. The certificates will also be sent to schools after the Championships.

10. PROMOTION & RELEGATION SYSTEM

There shall be 16 boys' schools and 12 girls' schools in Division One. Division Two shall consist of 24 boys' schools and 24 girls' schools and the rest of entries will be in Division Three in their respective areas.

Division One

Boys: The last 2 schools in the overall points will be relegated to Division Two.

Girls: The last 2 schools in the overall points will be relegated to Division Two.

Division Two

Boys: The first 2 schools in the overall points will be promoted to Division One. The last 4 schools in the overall points will be relegated to Division Three.

Girls: The first 2 schools in the overall points will be promoted to Division One. The last 4 schools in the overall points will be relegated to Division Three.

Division Three (4 Areas)

Boys: The first school in the overall points in each area will be promoted to Division Two.

Girls: The first school in the overall points in each area will be promoted to Division Two.

11. UNIFORM

All competitors must be properly dressed in Athletics/P.E. uniform, i.e. in vest/T-shirt bearing their school name or abbreviation and rubber/spikes/training shoes. The four members in a relay team should wear identical school P.E. uniform. No competitor will be allowed to take part in any event if they are not properly dressed.

12. No competitor should leave the Sports Ground until the final results of his/her event are announced. If a re-run is awarded by the Referee upholding a protest competitors who have left the Sports Ground will forfeit their chance of competing in the re-run.

13. OUTSIDE ASSISTANCE

No competitor shall receive any assistance whatsoever from any person during the progress of an event. 'Assistance' includes conveying advice or information to an athlete by any means and pace-making. Athlete receiving advice or information will be warned or disqualified at the discretion of the Referee. Any person giving assistance to athlete will be warned and any repetition will result in action taking by the Management Committee.

14. PROTEST

14.1 Protests should be made in writing by the teacher/s in charge of the school/s being affected at an incident within 30 minutes of the announcement of the result of that event concerned. No protest will be accepted from student and spectator.

14.2 All protests concerning technical rules and interpretation should be made to the Referee. The decision of the Referee shall be final.

14.3 All protests concerning the management of the meet should be made to the convenor. The decision of the Management Committee of the meet shall be final.

15. SPECIFICATIONS

The followings are the specifications of the throwing events and hurdle races (Division II & III)

THROWING EVENTS

Events	Sex	BOYS			GIRLS		
	Grade	A	B	C	A	B	C
Shot Put		5 kg	4 kg	4 kg	4 kg	3 kg	3 kg
Discus		1.50 kg	1 kg	1 kg	1 kg	1 kg	1 kg
Javelin		700 gm	600 gm	-	600 gm	600 gm	-

HURDLES RACES (Height of Hurdles)

Events	Sex	BOYS			GIRLS		
	Grade	A	B	C	A	B	C
100M Hurdles		-	0.91 4m	0.84m	0.762m	0.762m	0.762m
110M Hurdles		0.91 4m	-	-	-	-	-
400M Hurdles		0.84m	-	-	-	-	-

STANDARDS FOR VARIOUS EVENTS

Division One (I)

Events	Sex	BOYS			GIRLS		
	Grade	A Grade	B Grade	C Grade	A Grade	B Grade	C Grade
100m		12.20	12.50	13.30	14.50	14.70	15.00
200m		25.50	26.50	27.50	30.50	31.00	31.50
400m		57.50	1:00.00	1:04.00	1:12.50	1:13.00	1:15.00
800m		2:20.00	2:23.00	2:32.00	2:53.00	2:55.00	2:57.00
1500m		4:58.00	5:00.00	5:20.00	6:15.00	6:25.00	6:30.00
3000m		-	11:15.00	-	-	-	-
5000m		20:00.00	-	-	-	-	-
100m Hurdles		-	17.00	19.50	19.50	20.20	21.00
110m Hurdles		18.50	-	-	-	-	-
400m Hurdles		1:06.50	-	-	-	-	-
High Jump		1.62m	1.55m	1.35m	1.32m	1.30m	1.25m
Long Jump		5.50m	5.10m	4.70m	4.10m	4.05m	3.80m
Triple Jump		11.20m	10.50m	-	-	-	-
Shot Put		10.50m	10.50m	8.50m	7.10m	7.50m	7.20m
Discus		26.00m	28.00m	20.00m	18.80m	18.50m	16.00m
Javelin		31.00m	26.00m	-	19.00m	18.00m	-
4x100m Relay		47.50	50.00	52.00	57.00	58.00	59.00
4x400m Relay		3:55.00	4:00.00	4:16.00	4:52.00	4:56.00	5:00.00

Division Two (II)

Events	Sex	BOYS			GIRLS		
	Grade	A Grade	B Grade	C Grade	A Grade	B Grade	C Grade
100m		12.70	13.00	13.60	15.20	15.30	15.40
200m		26.10	27.00	28.80	32.00	32.10	33.00
400m		1:00.00	1:01.00	1:07.00	1:16.50	1:16.50	1:18.00
800m		2:28.00	2:30.00	2:43.00	3:09.00	3:10.00	3:12.00
1500m		5:08.00	5:17.00	5:40.00	6:40.00	6:41.00	6:43.00
5000m		21:15.00	-	-	-	-	-
100m Hurdles		-	19.80	20.50	21.00	21.20	22.00
110m Hurdles		19.50	-	-	-	-	-
400m Hurdles		1:08.00	-	-	-	-	-
High Jump		1.60m	1.47m	1.35m	1.26m	1.23m	1.20m
Long Jump		5.30m	5.00m	4.30m	3.85m	3.80m	3.50m
Triple Jump		10.90m	10.00m	-	-	-	-
Shot Put		8.80m	9.50m	7.50m	6.40m	7.10m	6.30m
Discus		22.00m	23.50m	17.00m	15.90m	15.60m	12.50m
Javelin		27.50m	21.50m	-	15.00m	14.00m	-
4x100m Relay		48.50	50.00	54.00	59.40	59.40	59.70
4x400m Relay		3:59.00	4:09.00	4:30.00	5:08.00	5:12.00	5:15.00

Division Three (III)

Events	Sex	BOYS			GIRLS		
	Grade	A Grade	B Grade	C Grade	A Grade	B Grade	C Grade
100m		12.80	13.30	14.10	15.50	16.00	16.10
200m		26.50	27.00	29.50	33.00	33.00	34.00
400m		1:02.00	1:06.00	1:12.00	1:20.00	1:23.00	1:25.00
800m		2:34.00	2:40.00	2:50.00	3:18.00	3:19.00	3:21.00
1500m		5:30.00	5:35.00	5:55.00	7:10.00	7:10.00	7:10.00
5000m		22:10.00	-	-	-	-	-
100m Hurdles		-	20.00	21.00	22.50	23.00	24.00
110m Hurdles		20.30	-	-	-	-	-
High Jump		1.55m	1.45m	1.30m	1.26m	1.20m	1.15m
Long Jump		5.10m	4.80m	4.00m	3.80m	3.60m	3.40m
Triple Jump		10.80m	9.50m	-	-	-	-
Shot Put		8.80m	9.20m	7.50m	6.30m	6.80m	6.20m
Discus		20.00m	22.00m	15.00m	15.00m	13.50m	12.00m
Javelin		22.00m	18.00m	-	15.00m	-	-
4x100m Relay		50.00	52.00	56.00	1:02.00	1:03.00	1:04.00
4x400m Relay		4:06.00	4:20.00	4:45.00	5:30.00	5:31.00	5:40.00

Note: The HK Island and Kowloon Secondary Schools Regional Committee may amend the above standards upon request by respective Management Committee. Sufficient notice will be given to school if such amendment is necessary.

GENERAL RULES OF INTER-SCHOOL BADMINTON CHAMPIONSHIPS

1. **DUTIES OF HOME TEAM** (The first mentioned team in the fixture)
 - 1.1 To be responsible for the arrangement of umpires and linesmen.
 - 1.2 To bring the match shuttlecocks and score sheet provided by the Management Committee. **CN Alpha (Orange Label)-77** shuttlecocks has been adopted as official shuttlecock. Other brand of shuttlecocks can be used only when both teams agree. If all the shuttlecocks are used up before the end of the match, the home team and the away team should provide extra shuttlecocks alternately until the end of the match and these shuttlecocks must be the same brand of shuttlecocks used in the previous games.
 - 1.3 Before the game, the home team shall give a blank score sheet to the away team. Each captain or teacher-in-charge shall present the composition of his team in writing in the score sheet to his counterpart in the opposing team before the start of play. No alternation thereof shall be made afterwards. Any discrepancy will lead to the forfeiture of the game(s) in question.
 - 1.4 To see that the score sheets are completed and remind BOTH teams to fax the result sheet to the Federation office within 2 days of competition.
2. **STAFF MEMBERS**
 - 2.1 All teams must be accompanied by a team manager who is a staff member or authorized person of the school.
 - 2.2 Only the team manager can make appeal and communicate with opposing school.
 - 2.3 The name of the team manager should appear on the score sheet prior to the competition. The team manager has to sign the score sheet after the competition.
3. **PUNCTUALITY**
 - 3.1 If the full team fails to commence competition at the scheduled time shall lead to a walkover.
 - 3.2 In case of special circumstances, any team needing to alter the scheduled time of the match should consult the opposing team well in advance and permission must be given by the opposing team. The Federation office must be notified of any changes.
4. **UNIFORM**

All players should wear SHORT SLEEVES sports wear bearing school name, school badge, abbreviation, or school logo. All players should also wear sport shorts or long PE trousers. It is not necessary for all players to dress in same colour or identical uniform.
5. **UMPIRES**
 - 5.1 The home team shall provide umpires for the odd number games while the away team the even number games.
 - 5.2 The umpire, before the commencement of a game, shall see to it that each team has provided 2 linesmen for the game. In double games, the umpire can ask for additional linesman from each team.
 - 5.3 Teachers-in-charge should emphasize to their umpire and linesmen the importance of fair play and neutral judgement. Players and spectators should also be told to be careful when using facilities of schools and games halls.
 - 5.4 With the help of HKBA, participating schools may request neutral umpires for their matches through the Convenor if both of the opposing teams agree. Both schools must be responsible for the charges involved and the Convenor must be notified at least 14 days before the date of the match.

6. CLASSIFICATION OF TEAMS

- 6.1 2 points for a win, 1 point for a loss and zero point for giving away a walk-over.
- 6.2 If two teams tie on points, the winner of the match between the two teams shall be awarded the higher position.
- 6.3 If three or more teams tie on points, the winner will be decided by:-
 - i. games difference in the match among teams concerned, if undecided
 - ii. points difference in the matches among teams concerned
- 6.4 If at any stage, using the above criteria in 6.3 (i) and (ii), a multiple team is reduced to a tie involving only two teams, the procedure in 6.2 will automatically be applied.
- 6.5 If it is reduced to a tie still involving more than two teams, the procedure beginning with 6.3 (i) is repeated.
- 6.6 In the event of a walk-over, the score should be recorded as 3:0.

7. Any player or pair unable to play when requested to do so shall forfeit the game concerned, and it shall be scored as a win for the opponent by one game.

8. BEHAVIOUR

- 8.1 Competitors and student spectators must behave properly.
- 8.2 Student/competitor misbehaving will be requested to leave the competition centre. Such misbehaviour will be reported to the Discipline Committee for further action.

9. PROTEST

Protest should be lodged to Management Committee within 3 working days of the date of the match.

10. In general, HKBA Rules shall apply.

11. SYSTEM OF PLAY

- 11.1 Thomas Cup & Ulba Cup system be adopted in the boys & girls competition respectively. Should there be any amendment to the competition system of the 2 cups in future, the Federation would review the system for schools competition accordingly.
- 11.2 A team for each match shall consist of 5 to 7 players. There must be at least 5 players present before the start of a match.
- 11.3 Each team shall be arranged in such a way as to provide 3 singles and 2 doubles. Players can play in one single and one doubles game only but two singles cannot play together in a double game. Double players cannot play in two doubles.
- 11.4 21 points system is adopted in all games, including all singles and doubles.
- 11.5 The order of play shall be as follows:-

<u>Game</u>	<u>Home Team</u>	<u>Away Team</u>
1	First Singles	First Singles
2	First Doubles	First Doubles
3	Second Singles	Second Singles
4	Second Doubles	Second Doubles
5	Third Singles	Third Singles

- 11.6 The winner of the match shall be the team that wins 3 games first.

12. Interruption of Play

In the case when a match cannot be completed as scheduled, the home team should report the case to the Federation Office within 2 working days of the match. If a re-arrangement is necessary, the re-match shall continue from where it has been stopped using same players of the interrupted match.

GENERAL RULES OF INTER-SCHOOL BASKETBALL CHAMPIONSHIPS

1. Unless otherwise stated, the rules of the Hong Kong Basketball Association shall be applied.

2. CLASSIFICATION OF TEAMS

2.1 The classification of teams shall be made on points according to their win-loss records, namely 2 points for each match won, 1 point for each match lost, and 0 point for a match lost by walk-over. In case of walk-over, the score shall be recorded as 20 : 0.

- i. If there are two teams equal in this classification, the result of the match between the two teams involved will be used to determine the placings.
- ii. If more than two teams are equal in the placings, a second classification will be established, taking into account only the results of the matches between the teams that are tied.

In the event that there are still teams tied after the second classification, then goal average (total plus score divided by total minus score), taking into account only the results of the matches between the teams still tied, will be used to determine the placings. If there are still teams tied, the placings will be determined using goal average from the results of all their games played in the group. If still undecided, placing will be decided by lots drawing.

2.2 If at any stage, using the criteria in 2.1(ii), a multiple teams tie is reduced to a tie involving only two teams, the procedure in 2.1(i). will automatically be applied. If it is reduced to a tie still involving more than two teams, the procedure beginning with the first paragraph of 2.1(ii) is repeated.

3. BALLS

Both teams shall supply a match ball that conforms to the rules of the game. Boys: Size 7, Girls: Size 6

4. UNIFORM AND COLOURS

4.1 Each team shall wear distinctive single coloured vests or singlets.

4.2 Each player shall be numbered on the front and back of his shirt with plain numbers of a solid colour contrasting with the colour of the shirt.

4.3 The number on the player's front shall be 10cm high, and on his back 20cm high.

4.4 The numbers shall be from 1 to 15 and there cannot be duplicate number on the same team.

4.5 Team Colour

4.5.1 The first team named in the fixture (home team) shall wear light-coloured shirts.

4.5.2 The second team named in the fixture (away team) shall wear dark-coloured shirts.

4.5.3 However, if two teams involved agree, they may interchange the colour of the shirts.

4.5.4 Light-colour means white or yellow colour.

4.5.5 Teams may wear other colour shirts irrespective of the rules above provided that the colour will not clash with the colour of the opposing team and prior consent of the opposing team has been sought.

4.5.6 In the case of controversy on similar colour, the match referee's decision is final.

4.5.7 No team is allowed to wear grey colour.

5. REFEREES

- 5.1 Official referees shall be appointed by the Federation for all matches.
- 5.2 Unless otherwise informed, both teams shall provide a scorer for each match.
- 5.3 Should the appointed referees fail to turn up within 10 minutes of the scheduled starting time of a match, the teachers-in-charge of the teams concerned shall arrange between themselves a referee to officiate the game. Failure to do so will lead to a double walk-over and no replay shall be arranged.

6. DURATION OF THE GAME

- 6.1 The game shall consist of four (4) periods of ten (10) minutes. (Extra period: 5 minutes). If there is a tie after the extra period, the match shall continue by using the Golden Goal method. The match shall end whenever there is a successful goal during the golden goal period. All remaining penalties shall apply and all successful goals shall be counted.
- 6.2 There shall be an interval of 30 seconds between the first and second period, between the third and fourth period and before an extra period. There shall be a half-time interval of two (2) minutes.
- 6.3 Timeouts:
Five (5) charged time outs may be granted to each team during normal playing time, two (2) charged time outs any time during the first half (1st and 2nd periods) and three (3) charged time outs any time during the second half (3rd and 4th periods) and one (1) charged time-out during the extra period. No time-out is allowed in the period when the golden goal method is used.
- 6.4 Time-Keeping
 - 6.4.1 In the last two (2) minutes of the fourth period and the extra period, the clock will stop in accordance with the FIBA rules.
 - 6.4.2 During the match, when the ball is out of bound, a new 24-second period shall be awarded to the control team.
 - 6.4.3 After a charged time-out, (except in the last two minutes of the fourth period and the extra period) the clock will start when the ball is given to a player during a free-throw.
- 6.5 The 24 second rule:
Whilst a shot from the court, the ball is in the air and the 24 second signal sounds, if the ball touches the rim, the game will no longer be stopped.

7. Jump balls:

The first period begins with a jump ball, all other periods and overtime will begin with the alternating possession rule.

8. Discipline

When a player is sent off because of a disqualifying foul, the referee shall report the incident to the Management Committee for action.

9. Interruption of Play

When a match cannot be completed during any time of play (1st half, 2nd half, extra period and golden goal period) and the Management Committee has decided a replay, scores and foul record will be retained and the remaining time to be replayed.

GENERAL RULES OF INTER-SCHOOL CROSS-COUNTRY CHAMPIONSHIPS

Division	Date	Time	Venue
I	14 / 11 / 2011	12:00nn-5:00pm	Hong Kong Golf Club
II	24 / 11 / 2011	9:00am-2:00pm	Aberdeen Reservoir
III (Area 1)	16 / 11 / 2011	9:00am-2:00pm	
III (Area 2)	17 / 11 / 2011	9:00am-2:00pm	
III (Area 3)	23 / 11 / 2011	9:00am-2:00pm	

1. No individual entry will be accepted.
2. **FOOTWEAR**
Spikes shoes should not be worn. Rubber studs or strong running shoes are recommended.
3. **TEAMS**
 - 3.1 A team will consist of 8 runners with the first 6 home to count for points. For Division Three Competition, there shall be 6 runners with the first 5 home to count for points.
 - 3.2 In case of a tie between two teams, it shall be resolved in favour of the team whose last scoring member finished nearer the first place. Team with less than 6 runners (5 in Div. III) will not be allowed to compete.
4. **PRIZES**
The first four teams in each grade will each be awarded a pennant. A medal will be awarded to each member of the winning teams. In addition, the first ten individual winners of each grade will also be awarded.
5. **REFRESHMENT**
Please note that refreshment will not be provided and schools are advised to bring along their own refreshment.
6. **SAFETY**
The Management Committee will try to arrange First-Aid team to attend the Championships. However, teacher-in-charge should try to arrange their own first-aider. Athletes must be told to watch out for traffic and to follow the course as outlined.
7. No competitor is allowed to receive assistance or refreshment from any person during the progress of the races.
8. **REPORTING**
After arriving, team member should get change as soon as possible. Teacher-in-charge should report to the check-in registration tables for roll call. After the announcement of check-in registration is made, teachers-in-charge should make sure that their members have pinned the race number clothes on the front side of their running vest and lined up in the race number order with their registration card together with the team register form before going to the official table for check-in registration. Team register form (in triplicate) should be prepared beforehand. Names of competitors and their race numbers must be clearly written on the

forms. After the check-in registration, one copy of the team register form will be kept by the check-in registration officer. The other two copies will be returned to schools for recording.

9. BRIEFING

A briefing of the race in Chinese and English will be given before the race starts. Details of the race will be explained. Competitors are asked to pay special attention to the briefing and to follow instruction as given.

10. ROUTE MARKERS & SIGNAGE

There will be sufficient signage, or if possible, route markers on the courses. Competitors should follow direction as indicated.

11. FINISHING

Each competitor will be given a finishing position card as soon as he/she passes the finishing line. He/she should bring their position card to their own recording table. The recorders (provided by their own school) should collect the position cards and race numbers from their runners.

12. RECORDING PROCEDURE

Competing schools must nominate one teacher or 2 senior students to act as recorders for their own schools. The recorders should see that all competitors report to them with their position cards after they have finished their race. (Chief finishing judge should be informed if any competitor withdraws from the race). The recorders should enter the results of their own competitors in the team register form and add up the first SIX positions. (Five in Div. III) Recorders should hand in the team register form (in duplicate) together with the finishing position cards to the chief recorder for checking. After the results have been checked by the Chief recorder, one copy of team register form will be kept by the Management Committee. The other copy will be returned to schools for their retention.

13. SPECIAL INSTRUCTION

Teachers-in-charge are requested to ensure that student spectators and their officials do not wander around the competition centre. They must try to co-operate to keep the centre clean and tidy. Running along side with competitors are prohibited.

GENERAL RULES OF INTER-SCHOOL FENCING CHAMPIONSHIPS

Division	Date	Time	Venue
Individual Tournament	# 19 / 11 / 2011	9:00am-8:00pm	To be confirmed
League	# 20 / 11 / 2011		

Tentative schedule, subject to venue availability

1. Unless otherwise stated, all matches will be fenced according to the Rules of the F.I.E.

2. TEAM COMPETITION

- 2.1 Competition will be in open grade, boys and girls.
- 2.2 Three weapons will be fenced: Foil, Epee and Sabre.
- 2.3 Foil, Epee and Sabre competition will be counted for overall title.
- 2.4 Fencers can only participate in one weapon competition, i.e. either in Foil, Epee or Sabre competition.
- 2.5 A team shall consist of 3 fencers plus 1 reserve for each match.
- 2.6 A match shall be decided by 45 hits of 9 games.
- 2.7 Competition will be in 2 stages. Teams will be divided into groups. A round robin will be played in the first round and top teams will qualify for the final.
- 2.8 Overall points will be given to teams according to their final ranking as follows:-

<u>Position</u>	<u>Points</u>
1	18
2	14
3	12
4	10
5	8
6	6
7	4
8	3
9	2
10	1
11 & below	0

- 2.9 The aggregate points of 3 weapons competition (Foil, Epee & Sabre) will decide the ranking of the overall title.
- 2.10 The ranking of overall title will count towards the BOCHK Bauhinia Bowl Award.
- 2.11 Teams must be accompanied by staff-in-charge. Teams without staff-in-charge will not be allowed to compete.

3. INDIVIDUAL TOURNAMENT

- 3.1 Three weapons will be fenced.
 Foil, Epee & Sabre - A grade under 20 years (Boys & Girls)
 B grade under 16 years (Boys & Girls)
 C grade under 14 years (Boys & Girls)
- 3.2 Each School is allowed to enter not more than 4 fencers in an individual event.

- 3.3 Each fencer may participate in one weapon.
- 3.4 Competition may be combined if there is not sufficient entries in one grade.
- 3.5 Schools may be divided into Hong Kong Island Area and Kowloon Area to compete.
- 3.6 Separate entry form for Individual Tournament will be circulated to member schools prior to the competition.

4. REGISTRATION CARD

All fencers must produce their student registration cards to umpire before competition.

5. EQUIPMENT AND CLOTHING

All matches will be fenced with electronic equipment and full fencing uniform. Fencers and staff-in-charge must wear plimsoll footwear which should be without heels and non-marking. Fencers should provide their own personal electric fencing uniform & equipment.

6. SAFETY RULES

- 6.1 Full fencing uniform consisting of a mask, a full jacket, an underplastron, breeches, stocking and a glove which adequately covers the opening of the sleeve must be worn. Shorts are not acceptable for competitive fencing.
- 6.2 Masks should be in good condition, free from rust and with the bib attached.
- 6.3 Shoes should provide sufficient contact with the floor surface to prevent slipping. Shoes with worn soles are particularly dangerous.
- 6.4 A Sword must NEVER be pointed at anyone who is not wearing a fencing uniform including a mask.
- 6.5 Anyone who is not fencing, must remain well clear of the piste while fencing is in progress.

GENERAL RULES OF INTER-SCHOOL FOOTBALL CHAMPIONSHIPS

1. Unless otherwise stated, the competition will be played according to the rules of Hong Kong Football Association.

2. CLASSIFICATION OF TEAMS

The classification of teams shall be made on points according to their win-loss records:

- 2.1 Three points for a win, 1 point for a draw, zero point for a loss or walk over. The score for a walk over shall be 2:0.
- 2.2 If there are two teams equal in league points, the result of the match between the two teams involved will be used to determine the placings. If the match is a draw, then the placings will be determined according to the classification beginning with item 2.6.
- 2.3 If three or more teams are equal in league points, the results of the matches between the teams that are tied will be used to determine the placings.
- 2.4 In the event that there are still teams tied, then goal average in matches between the teams that are tied will be used to determine the placings.
- 2.5 If still tied, then the number of goals scored in matches between the teams that are tied will be used to determine the placings.
- 2.6 If still tied, then the goal average in matches of the teams played in the group will be used to determine the placings.
- 2.7 If still tied, then the number of goals scored in matches of the teams played in the group will be used to determine the placings.
- 2.8 If still tied, then sportsmanship record of the teams in matches played in the group will be used to determine the placings. (Red Card - 3 points; Yellow Card - 1 point, less aggregated points will be placed in higher position)
- 2.9 If still tied, the placing will be taken by a draw conducted by respective Management Committees.
- 2.10 If at any stage, using the criteria in item 2.3 to 2.8, a multiple team tie is reduced to a tie involving only two teams, the procedure in item 2.2 will automatically be applied.
- 2.11 If it is reduced to a tie still involving three or more teams, the procedure beginning with item 2.3 is repeated.
- 2.12 In the case of a draw in full time in knock out stage, the match will be decided by taking of the penalty kick.
 - 2.12.1 Only the on-field players when the whistles finished at the second half are entitled to kick.
 - 2.12.2 Each team can have five kicks taken by different players.
 - 2.12.3 If scores are equal after five kicks for each team, the process is repeated using "sudden death" method until a decision is reached.
 - 2.12.4 Each kick must be taken by different players. In the second set of kicks, a further five players entitled to kick are named (players who have kicked may be used again).

3. BALLS

- 3.1 Size No. 5 footballs (i.e. regulation size) shall be used by A, B & C grades.
- 3.2 Both teams shall each supply a match ball of the correct size. A double walk over will be declared if both teams cannot supply a match ball.

4. FOOTBALL BOOTS AND STOCKINGS

- 4.1 Football boots may be worn by A, B & C grade players provided that they conform with football rules and specification of venues.
- 4.2 Long stockings and shin pads must be worn by all players.

5. UNIFORM AND COLOURS

- 5.1 Players' numbers shall be from 1 to 99 and there cannot be duplicate number on the same team.
- 5.2 Team colours please refer to General Rules of Sports Competition item 7.
- 5.3 Team captain should wear an arm band of distinguishable colour.

6. SPECTACLES

- 6.1 No spectacles are allowed.
- 6.2 Players with eye disorders or specific reason provided with medical certificate issued by Registered Optometrists may write to the management committee for exemption prior to the competition;
- 6.3 Such sports spectacles should meet safety standards and cause no harm to the player itself and other participants;
- 6.4 Such sports spectacles must be inspected and verified by the referee before each match.

7. REFEREES

- 7.1 Official referees shall be appointed for all matches.
- 7.2 Should the appointed referee fail to turn up within 5 minutes of the scheduled starting time, the staff member in-charge of each team shall agree on someone to referee the match and the match shall start not less than 10 minutes after the scheduled time.
- 7.3 In the event of bad weather, only the referee has the power to decide on postponement if the ground condition is not suitable for competition.

8. DURATION OF THE MATCH

- 8.1 A Grade - 35 minutes each half.
- 8.2 B Grade - 25 minutes each half.
- 8.3 C Grade - 25 minutes each half.

9. PUNCTUALITY

- 9.1 Please refer to General Rule of Sports Competition item 1.
- 9.2 A minimum of 7 players must be present before a team can play.

10. DISCIPLINE

- 10.1 Please refer to General Rule of Sports Competition item 3.
- 10.2 When a player is sent off, the referee shall report the incident to the Management Committee for action.
- 10.3 A send-off (red card) shall result in a mandatory suspension of one match. Two cautions (yellow cards) accumulated in different matches shall result in a mandatory suspension of one match. The player will serve his suspension immediately in the coming match. Serious offences shall be dealt with separately by the Disciplinary Committee of the HK Island and Kowloon Secondary Schools Regional Committee.
- 10.4 The staff member of the first named team on the fixture will be the duty officer of the match to deal with problem that may arise.

11. SUBSTITUTION

Each team will be allowed to substitute 3 players in a match (including substitution for an injured goalkeeper).

12. INTERRUPTION OF PLAY

In the case when a match cannot be completed as scheduled, all disciplinary sanctions of the cancelled match should be retained and penalties imposed accordingly. If a re-match is necessary, the whole match shall be replayed.

GENERAL RULES OF INTER-SCHOOL HANDBALL CHAMPIONSHIPS

1. Unless otherwise stated, the rules of the Hong Kong Amateur Handball Association shall apply.

2. CLASSIFICATION OF TEAMS

2.1 A single round robin system shall be adopted in the preliminary round. Final round will be in knock out basis.

2.2 Two points shall be awarded for a win, one point for a draw, zero point for a loss and minus one point for a walk over.

2.3 In case of walk over, the score shall be recorded as 12:0.

2.4 If two teams tie on point, the winner will be decided by:

2.4.1 the winner of the match between the two teams shall be awarded the higher position; if the match ended in a draw,

2.4.2 Goal differences of all the matches competed by the two teams in the league; if still undecided;

2.4.3 The team with the highest number of goals scored shall be awarded the higher position, if still undecided;

2.4.4 to be resolved by the Management Committee.

2.5 If three or more teams tie on points, the winner will be decided by:

2.5.1 Goal differences in the matches among teams concerned; if undecided,

2.5.2 Goal differences of all the matches competed by teams concerned in the league; if still undecided,

2.5.3 The team with the highest number of goals scored shall be awarded the higher position; if still undecided;

2.5.4 to be resolved by the drawing lots.

2.5.5 If at any stage, using the criteria in item 2.5.1-2.5.3, a multiple team tie is reduced to a tie involving only two teams, the procedure in item 2.4.1 will automatically be applied. If it is reduced to a tie still involving three or more teams, the procedure beginning with item 2.5.1 is repeated.

2.6 In the case of a draw in full time in knock out stage, the match will be decided by taking of the 7-metre throw.

2.6.1 Each team will take 5 throws alternatively to decide the winner.

2.6.2 All registered players of the match who are not disqualified, excluded, or suspended when the whistles finished at the second half are entitled to throw.

2.6.3 Each throw will be taken by different players.

2.6.4 If scores are equal after five throws for each team, the process is repeated using "sudden death" method until a decision is reached.

2.6.5 In the second (or any other following) set of five throws, a further five players entitled to throw are named (players who have thrown may be used again).

3. Competition Team

3.1 A minimum of 6 players must be present before a team can play.

3.2 Each team may register at most 14 members for a match.

4. BALLS

- 4.1 Boys A Grade: Size No. 3
Boys B, C and Grils AB Grade: Size No. 2
Girls C Grade: Size No. 1
- 4.2 Both teams shall supply a match ball that conforms to the rules of the game. The referee will decide which ball will be used for competition.

5. UNIFORM AND COLOURS

- 5.1 All the court players on a team must wear identical uniforms. The combinations of colors and design for the two teams must be clearly distinguishable from each other. The players used in the goalkeeper position on a team must wear a colour that distinguishes them from the court players of both teams and the goalkeeper(s) of the opposing team. No player can wear black colour uniform which has been reserved for the referee.
- 5.2 The players must wear numbers that are at least 20cm high in the back of the shirt and at least 10cm in the front. The numbers used should be from 1 to 99. There should be no duplicate number on the same team.
- 5.3 The color of the numbers must contrast clearly with the colors and design of the shirt.
- 5.4 The captain of each team must wear an armband around the upper arm. It should be about 4cm wide and its color must contrast with those of the shirt.
- 5.5 Please refer to General Rules of Sports Competition item 7.

6. REFEREES

- 6.1 Official referees and a scorer/timekeeper shall be appointed by the HKAHA for all matches.
- 6.2 Should the appointed referees and scorer/timekeeper fail to turn up within 10 minutes of the scheduled starting time of a match, the teacher-in-charge of the teams concerned shall arrange between themselves a referee to officiate the game.
- 6.3 In the event of bad weather, the referee and the duty officer have the power to decide on postponement if the ground is not suitable for competition.
- 6.4 In the event of amber rain storm warning, all OUTDOOR handball matches will be cancelled automatically but indoor matches will be conducted as usual.
- 6.5 Please refer to General Rules of Sports Competition Item 6 for further information on inclement weather.

7. DURATION OF THE GAME

20 minutes each half.

8. DISCIPLINE

- 8.1 Please refer to General Rules of Sports Competition item 3.
- 8.2 A disqualification (red card) shall only result in a mandatory suspension of the current match.
- 8.3 An exclusion shall result in a mandatory suspension of two matches.
- 8.4 Referee shall forward written report to the Management Committee for necessary action in case of giving disqualification and/or exclusion.

9. Interruption of Play

In the case when a match cannot be completed during any time of play (1st half, 2nd half and 7 metre throw) and the Management Committee has decided a replay, team players, scores and foul record will be retained and the remaining time to be replayed.

GENERAL RULES OF INTER-SCHOOL BOYS HOCKEY CHAMPIONSHIPS

1. Unless otherwise stated, the Laws of the Hong Kong Hockey Association shall apply.
2. **SYSTEM OF COMPETITION**
 - 2.1 Member schools in Hong Kong Island, Kowloon and New Territories are eligible to participate in Team Competition.
 - 2.2 Two points shall be awarded for a win, one point for a draw and zero point for a loss or forfeit. The score for a forfeit will be 5:0. If two or more teams tie on points, the positions shall be decided by goal difference.
 - 2.3 In the event of a tie in total points and again in goal difference, the team with the higher number of goals scored shall be awarded the higher position.
 - 2.4 Should the tie persist, the position shall be decided by a play off match. (The play off match shall be played only if the tie affects the first four positions in the final round or the promotion to the next round).
 - 2.5 Should the play off match end in a draw at full time, no extra time shall be played and the match shall be decided by the taking of penalty flicks from the Penalty spot in the method stipulated by Hong Kong Hockey Association.
 - 2.6 Single round robin shall apply in the preliminary round competition.
 - 2.7 Each team shall consist of 11 players (minimum of 8 players to start a game).
3. **BALLS**

Both teams shall each supply a match ball of the correct size.
4. **BOOTS AND GUARDS**
 - 4.1 Astro turf boots should be worn by all players. No metal studs are allowed on artificial pitches.
 - 4.2 Long socks holding shin pads in unify colour (except white colour) should be worn.
 - 4.3 Mouthguards are strongly recommended.
 - 4.4 Goalkeeper should wear suitable protection gear.
5. **COLOURS**
 - 5.1 Please refer to General Rules of Sports Competition item 7.
 - 5.2 Team captain should wear an arm band of distinguishable colour.
6. **SPECTACLES**

Spectacles are allowed.
7. **REFEREES**

Each school should provide 1 umpire per game. If both teams fail to provide umpire, a double walkover will be declared.
8. **DURATION OF THE MATCH**

Open - 35 minutes each half.
9. **DISCIPLINE**
 - 9.1 When a player is sent off, the referee shall forward report to the Convenor for action.
 - 9.2 A send-off (red card) shall result in Convenor and HKSSF ruling on continued eligibility to play. Yellow cards may be awarded for deliberate and persistent breaches. A green card can be given as a warning.
10. **SUBSTITUTION**

Each team can substitute any number of player in a match.

GENERAL RULES OF INTER-SCHOOL GIRLS HOCKEY CHAMPIONSHIPS

1. MEETING OF PARTICIPATING SCHOOLS

A meeting of participating schools will be held in early September to finalize details of the competition.

2. SYSTEM OF COMPETITION

2.1 Member secondary schools in Hong Kong Island, Kowloon and New Territories are eligible to participate in Team Competition.

2.2 Senior League

2.2.1 There will be two competitions in Senior League with Girls A Grade Division One and Girls A Grade Division Two. Girls A Grade Division One team is compulsory for all participation schools. Other girls in A Grade and B Grade will be grouped into Girls A Grade Division Two team and competed in another pool.

2.2.2 Only result of Girls A Grade Division One will be counted towards BOCHK Bauhinia Bowl Award.

2.2.3 Matches will be played on weekdays after school.

2.2.4 Fixtures will be scheduled from mid- September to early December.

2.3 Junior League

2.3.1 Girls under 14 of age will play in Girls Junior League. There will be two divisions which are C Grade Division One and C Grade Division Two. Girls C Grade team is compulsory for all participating schools. Other girls in C Grade will be grouped and competed in Division Two.

2.3.2 Only result of Girls C Grade Division One will be counted towards Bauhinia Bowl Award.

2.3.3 Fixtures will be scheduled from January to April.

3. CLASSIFICATION OF TEAMS

3.1 Three points shall be awarded for a win, one point for a draw and zero point for a loss. In the event of forfeit, three points awarded to the winning team and 4 goals.

3.2 If there is a draw on points, winning teams will be decided by

3.2.1 If the match is a draw, the goal difference will be used to determine the placing.

3.2.2 If still tied, goals for will be counted to determine the placing.

3.2.3 If still tied, the result of the match played between the two teams will be used to determine the placing.

3.2.4 If still tied, coin will be flipped conducted by respective Management Committees to determine the placing.

3.2.5 If in Tournament, number of penalty corners will be counted; if still tie, teams will finish equal position in the Tournament.

3.3 Semis and Finals resulting in a tie will be decided by five penalty flicks followed by sudden death. No extra time to be allowed.

4. TOURNAMENTS

Tournament will be organized pending on the availability of pitches.

5. DURATION OF GAME

5.1 Girls A Grade 25 minutes each way.

5.2 Girls C Grade 20 minutes each way.

5.3 Depending on the availability of pitches, two matches can be scheduled on one time slot.

6. UMPIRES

6.1 Each school should provide one umpire for each game.

6.2 HKHA will be approached to provide umpires for semis and finals.

7. REGISTRATION CARDS

All players must be registered and registration cards produced at competition.

8. PLAYERS AND KIT

8.1 A minimum of 8 players is required to start a game.

8.2 A player can play in one team only and must play in the grade she has been registered.

8.3 It is compulsory for all students to wear shin pads.

8.4 It is compulsory for a Goalkeeper or kicking back to wear a helmet; otherwise no Goalkeeper will be allowed.

8.5 Players should be suitably attired in school colour kit. Where there is a clash of colour, the home team should provide bibs.

9. RULES

Normal FIH rules apply except for the rule concerning time of game.

GENERAL RULES OF INTER-SCHOOL NETBALL CHAMPIONSHIPS

1. MEETING OF PARTICIPATING SCHOOLS

A meeting of participating schools will be held in early September to finalize details of the competition.

2. SYSTEM OF COMPETITION

2.1 Member Secondary Schools in Hong Kong Island, Kowloon and New Territories are eligible to participate in Team Competition.

2.2 Senior League

2.2.1 There will be A Grade, B Grade and A2 team, B2 team.

2.2.2 A player can play in one team only and must play in the grade she has been registered. A Grade and B Grade team is compulsory for all participating schools. Other girls in A Grade and B Grade will be grouped and competed in A2 team and B2 team competitions respectively.

2.2.3 Result of A Grade and B Grade will be counted towards BOCHK Bauhinia Bowl Award.

2.2.4 Matches will be played on Monday and Wednesday after school and Saturday afternoon.

2.2.5 Fixtures will be scheduled from September to December.

2.3 Junior League

2.3.1 There will be C Grade and U14 team.

2.3.2 A player can play in one team only and must play in the grade she has been registered. C Grade team is compulsory for all participating schools. Other girls in C Grade will be grouped and competed in U14 team.

2.3.3 Result of C Grade will be counted towards BOCHK Bauhinia Bowl Award.

2.3.4 Matches will be played on Monday and Wednesday after school and Saturday afternoon.

2.3.5 Fixtures will be scheduled from January to March.

3. CLASSIFICATION OF TEAMS

3.1 Four points shall be awarded for a win, two points for a draw, one point for a loss and zero point for a forfeit.

3.2 If two teams tie on point, the winner of the match between the two teams shall be awarded the higher position; if the match ended in a draw, then teams will share equal position.

3.3 If three or more teams tie on point, results in the matches among the teams shall determine the ranking.

4. TOURNAMENTS

Tournaments will be organised pending on pitch availability.

5. DURATION OF PLAY

A Minimum of 10 minutes each half preferably 15 minutes.

6. BALLS

Size No. 5 ball will be used.

7. REGISTRATION CARDS

All players must be registered and registration cards produced at competition.

8. UMPIRES

Each school should provide at least one umpire who has attended an HKNA umpiring course. Failure to provide umpire will lead to forfeiture of game.

9. TEAM COLOUR

Participating schools will declare the colour of their shirts before competition. Schools should try to avoid clash of colour during competition.

10. BOCHK Bauhinia Bowl

The A, B and C Grade will count towards the BOCHK Bauhinia Bowl Award.

GENERAL RULES OF INTER-SCHOOL RUGBY CHAMPIONSHIPS

1. MEETING OF PARTICIPATING SCHOOLS

A meeting of participating schools will be held in September to finalize the schedule of competition.

2. SYSTEM OF COMPETITION

2.1 Member Secondary Schools in Hong Kong Island, Kowloon and New Territories are eligible to participate in Team Competition.

2.2 'A' and 'B' Team

2.2.1 Every school will play each other twice in a league.

2.2.2 Each team shall consist of 15 players.

2.2.3 'A' team shall consist of the best players while the 'B' team shall consist of the second best players.

2.2.4 4 or 5 substitutions will be allowed during the game.

2.2.5 Duration: 35 minutes each half.

2.2.6 Size No. 5 rugby ball will be used.

2.2.7 'A' team fixture will be held on Tuesday after school whereas 'B' team fixture will be held on Friday after school or Saturday mornings.

2.3 'C' Team

2.3.1 Each team shall consist of 15 players.

2.3.2 Duration: 30 minutes each half.

2.3.3 Size No. 5 rugby ball will be used.

2.3.4 Fixtures will be played Thursday after school.

2.4 'D' Team

2.4.1 A friendly tournament will be organised.

2.4.2 Each team shall consist of 12 players.

2.4.3 Fixtures will be arranged on Saturday mornings.

2.4.4 Size No. 4 rugby ball will be used.

2.4.5 Duration: 12 minutes straight through - no half time.

3. HOME TEAM RESPONSIBILITY

Home team will be responsible for supplying the match ball and bring along first aid kit.

4. REFEREE

Matches will be refereed by teachers of participating schools. Some of the 'A' and 'B' team competition may be refereed by HKRFU Referees.

5. UNIFORM

All players will wear shirts, shorts, long socks, boots (either moulded or studs) and must wear gum shields.

6. TOURNAMENT

Several tournaments will be held and there will be variations in the numbers of players per team. Participating schools will be informed accordingly.

7. BOCHK Bauhinia Bowl

Division One A, B & C teams will count towards the BOCHK Bauhinia Bowl Award.

GENERAL RULES OF INTER-SCHOOL SQUASH CHAMPIONSHIPS

Competition	Date	Time	Venue
Individual	8, 9, 15, 16/10/2011	9:00am-9:00pm	Hong Kong Squash Centre
League	May 2012		

The Inter-school squash competition is organised by the HK Island and Kowloon Secondary Schools Regional Committee with the assistance of the Hong Kong Squash. The competition is organised under the Rules of the World Squash Federation (WSF). Queries regarding these regulations should be directed to the Management Committee for clarification.

1 FORMAT

- 1.1 For Boys Team Competition, matches will be played between teams of five players and the playing order will be:5, 4, 3, 2, 1. Each rubber best of 3 games and Point-a-rally (PAR- both the server and the receiver can score points on every rally) scoring up to 11 points (for 10-all, a tie breaker will be played with the winner decided when a player achieves two clear points) will be adopted. Each match is for seven points, one point per rubber and two extra points for the match winner.
- 1.2 For Girls Team Competition, matches will be played between teams of three players and the playing order will be:2, 1, 3. Each rubber best of 3 games and Point-a-rally (PAR - both the server and the receiver can score points on every rally) scoring up to 11 points (for 10-all, a tie breaker will be played with the winner decided when a player achieves two clear points) will be adopted. Each match is for five points, one point per rubber and two extra points for the match winner.
- 1.3 Teachers in charge must seed players in their order of ability and submit it to the Tournament Director / Convenor prior to the competition. The Convenor and the Tournament Director have the right to alter the ability order according to the professional opinion of officials of Hong Kong Squash, and to disqualify any team which purposely places its players in wrong order (5-0 in Boys, 3-0 in Girls).
- 1.4 In the event of teams gaining the same number of points at the end of the Championships the team with the most wins will be the winner. If there is still a tie the team with the most rubbers win. If still not resolved then the result in the match between the tied teams will prevail.

2. WALK OVERS

- 2.1 All team members should be ready to play at the designated start time of the match.
- 2.2 If a player due to go on court is not available 5 minutes from the end of the previous rubber then a walkover can be claimed.

3. REFEREES/ MARKERS

Qualified referees / markers will be appointed by the Hong Kong Squash.

4. REGISTRATION CARDS

No player will be allowed to play if he/she fails to produce their registration card at the start of the championship.

5. STAFF-IN-CHARGE

No team will be allowed to play unless a member of staff or designated adult is present.

6. MATCH BALL

The official ball is the DUNLOP Yellow dot.

7. EYE PROTECTION

All players must wear eye protection. Players must provide their own goggles

8. PROTESTS

8.1 Any protests should be directed to the Championships Director by the teacher or designated staff in charge of the team on the day of the Championships.

8.2 The decision of the Management Committee is final.

GENERAL RULES OF INTER-SCHOOL SWIMMING CHAMPIONSHIPS

Division	Date	Time	Venue
Division One	14 & 27/10/2011	8:00am - 6:00pm	Kowloon Park Swimming Complex
Division Two	13 & 19/10/2011		
Division Three (HK)	28/9 & 6/10/2011		
Division Three (K1)	29/9 & 7/10/2011		
Division Three (K2)	3 & 9/11/2011		

1. ENTRIES

- 1.1 Each school may enter **TWO** competitors in each event and **ONE** team in each of the relay races.
- 1.2 Each competitor may enter **TWO** individual events and either the medley or the freestyle relay. NOT both relays.
- 1.3 Names of competitors in both Chinese and English **MUST** be submitted **NOT LATER THAN 5:00 pm** as on:-

DIVISION ONE: 4 / 10 / 2011
 DIVISION TWO: 29 / 9 / 2011
 DIVISION THREE (HK): 16 / 9 / 2011
 DIVISION THREE (K1): 16 / 9 / 2011
 DIVISION THREE (K2): 24 / 10 / 2011

2. Substitution on the day of competition **will not be considered except in a case supported by doctor's certificate or with the approval of the referee or the convenor**. This will only apply in preliminary round and **no** substitution may be made for individual finals. If, however, an event is **programmed** as a straight final, substitution may be allowed.

Substitution may be made in relay finals, as long as the replacement swimmer has not already swum in a relay heat. (See note 1.2)

3. REGISTRATION OF COMPETITORS

Competitors must be registered and must produce their registration cards to the officials at the meet. Competitor without registration card is not allowed to take part in the competition.

4. OFFICIALS

Participating schools shall, when called upon, provide at least **TWO** PE Teachers or officials for each day of the meet. The Management Committee reserves the right to refuse any school which is unable to provide the requisite number of PE Teachers or officials to take part in the competition. If the appointed officials of a school do not turn up 15 minutes before the scheduled time of the competition, competitors of that school will not be allowed to take part in the competition until the nominated officials arrive at the swimming pool. Officials **should not leave their posts until the end of the programme** unless they have the approval of the convenor. If an official leaves his post without prior approval, the convenor shall report the case to the HK Island and Kowloon Secondary Schools Regional Committee.

5. REGULATIONS

5.1 Competition Rules

All events will be held in accordance with the competition rules of the Hong Kong Amateur Swimming Association as per FINA unless otherwise specified.

5.2 Swimming Costume

All swimming costumes must be one piece. Any competitor incorrectly dressed may be disqualified.

5.3 Competitors reporting procedure

Competitors must report to the Marshalling Area when their events are called, they must NOT go straight to the poolside. Each event will be called twice (Except Division One). Competitors will be sent from the Marshalling Area to the Poolside 2 heats in advance of their race. Any competitor who arrives after their event being sent to the poolside is liable to disqualification.

5.4 Selection for Finals

5.4.1 The 8 best times in heats will qualify for finals. Finalists will be seeded in lanes according to times as follows:-

Lane	Position according to Heats times
1.....	7th
2.....	5th
3.....	3rd
4.....	1st
5.....	2nd
6.....	4th
7.....	6th
8.....	8th

5.4.2 In the event that swimmers from the same or different heats have equal times registered to 1/100 second for the eighth place, there shall be a swim-off to determine which swimmer shall advance to the final. Such swim-off shall take place not less than one hour after all involved swimmers have completed their heat. Another swim-off shall take place if equal times are registered again.

5.4.3 All 200m events will be swum as straight final.

5.4.4 Straight Final

If 8 or less competitors, or teams, report to the marshalling area for any event (on heats day), the event will be declared a straight final, to be swum at the time scheduled for that final.

5.4.5 Lanes-straight final

Lanes for straight final will be drawn by the Management Committee.

6. TIMINGS

6.1 Electronic timing system installed in LCSD Swimming Pool will be regarded as the official time.

6.2 If the electronic timing system fails in a heat, hand timing will be recorded as the 'official time' for that event. Records will be acknowledged according to the 'official time'.

7. POINTS

Placing	1st	2nd	3rd	4th	5th	6th	7th	8th
Individual Event:	9	7	6	5	4	3	2	1
Relay Races.	18	14	12	10	8	6	4	2

- 7.1 When tying for a position each competitor tying for that position will be credited with an average of points awarded to that position and the position(s) following it.
- 7.2 Standard points shall be counted towards the Grade Championships and Overall Championships of the Swimming Championships. Standard points may only be gained during heats, unless the event is declared a straight final, in which case standard points may be gained in the final in addition to position points.

8. PRIZES

- 8.1 Medals will be awarded to the 1st, 2nd, 3rd and 4th places in each events.
 - 8.2 Each relay winning team will be awarded 6 medals and 4 certificates only.
 - 8.3 In each grade the winning school will receive the appropriate Challenge Trophy or Shield and a pennant. The rest of prizes will follow the standard set by the HK Island and Kowloon Secondary Schools Regional Committee.
 - 8.4 Standard Certificates will be awarded to competitors who reach standard in their events. These certificates will be sent to schools after the Championships .
 - 8.5 Record Breakers will receive Certificate of Merit at prize giving.
9. No competitor should leave the swimming pool complex until the final results of his/her event are announced. If a swim-off is awarded by the Referee upholding a protest, competitors who have left the complex will forfeit their chance of competing in the swim-off.

10. PROMOTION AND RELEGATION SYSTEM

There shall be 12 boys' schools and 12 girls' schools in Division One. Division Two shall consist of 16 boys' schools and 16 girls' schools. The rest of entries will be in Division Three in their respective areas.

Division One

The last 2 schools in the overall points will be relegated to Division Two.

Division Two

The first 2 schools in the overall points will be promoted to Division One. The last 3 schools in the overall points will be relegated to Division Three.

Division Three

The first school in the overall points in each area will be promoted to Division Two.

11. PROTEST

- 11.1 Protest should be made in writing by the teacher/s in charge of the school/s being affected at an incident within 30 minutes of the announcement of the result of that event concerned. No protest will be accepted from student and spectator.
- 11.2 All protests concerning technical rules and interpretation should be made to the Referee. The decision of the Referee shall be final.
- 11.3 All protests concerning the management of the meet should be made to the convenor. The decision of the Management Committee of the meet shall be final.

STANDARDS FOR VARIOUS EVENTS

Division One (I)

Events	Grade	Sex	BOYS			GIRLS		
			A	B	C	A	B	C
50m Free Style			29.50	30.50	33.50	35.00	36.00	37.00
100m Free Style			1:14.00	1:15.00	1:17.00	1:28.00	1:28.00	1:29.00
200m Free Style			3:15.00	3:20.00	3:30.00	3:40.00	3:40.00	3:40.00
50m Back Stroke			40.00	41.00	42.00	46.00	48.00	50.00
100m Back Stroke			1:40.00	1:50.00	1:50.00	2:00.00	2:00.00	2:00.00
50m Breast Stroke			40.00	40.00	44.00	47.00	48.00	48.50
100m Breast Stroke			1:35.00	1:36.00	1:40.00	1:48.00	1:50.00	1:55.00
200m Breast Stroke			3:40.00	3:45.00	4:00.00	4:30.00	4:30.00	4:36.00
50m Butterfly			37.00	37.50	44.00	42.00	44.00	45.00
200m Ind. Medley			3:30.00	3:40.00	3:50.00	3:40.00	3:50.00	4:20.00
4x50m Medley Relay			2:20.00	2:20.00	2:35.00	2:50.00	2:50.00	2:50.00
4x50m Free Style Relay			2:03.00	2:05.00	2:15.00	2:25.00	2:25.00	2:25.00

Division Two (II)

Events	Grade	Sex	BOYS			GIRLS		
			A	B	C	A	B	C
50m Free Style			30.00	31.00	34.00	35.00	36.00	38.00
100m Free Style			1:17.00	1:20.00	1:22.00	1:28.00	1:30.00	1:32.00
200m Free Style			3:15.00	3:20.00	3:30.00	-	-	-
50m Back Stroke			42.00	43.00	44.00	46.00	48.00	50.00
100m Back Stroke			1:40.00	1:50.00	-	-	-	-
50m Breast Stroke			40.00	42.00	44.00	47.00	48.00	50.00
100m Breast Stroke			1:35.00	1:36.00	1:40.00	1:48.00	1:50.00	1:55.00
200m Breast Stroke			3:40.00	3:45.00	4:00.00	-	-	-
50m Butterfly			37.00	38.00	44.00	46.00	48.00	50.00
200m Ind. Medley			3:30.00	3:40.00	3:50.00	3:40.00	3:50.00	-
4x50m Medley Relay			2:35.00	2:40.00	2:50.00	3:00.00	3:10.00	3:20.00
4x50m Free Style Relay			2:15.00	2:20.00	2:30.00	2:35.00	2:40.00	2:50.00

Division Three (III)

Events	Grade	Sex	BOYS			GIRLS		
			A	B	C	A	B	C
50m Free Style			35.00	35.00	39.00	40.00	41.00	43.00
100m Free Style			1:21.00	1:21.00	1:29.00	1:37.00	1:37.00	1:38.00
200m Free Style			3:16.00	-	-	-	-	-
50m Back Stroke			42.00	43.00	48.00	51.00	52.00	52.00
100m Back Stroke			1:40.00	1:50.00	-	-	-	-
50m Breast Stroke			-	-	51.00	52.00	53.00	55.00
100m Breast Stroke			1:44.00	1:45.00	1:51.00	1:57.00	1:57.00	2:01.00
200m Breast Stroke			3:52.00	3:52.00	-	-	-	-
50m Butterfly			38.00	40.00	45.00	46.00	50.00	50.00
200m Ind. Medley			3:30.00	3:40.00	3:50.00	-	-	-
4x50m Medley Relay			2:35.00	2:40.00	2:50.00	3:05.00	3:15.00	3:20.00
4x50m Free Style Relay			2:20.00	2:30.00	2:40.00	2:55.00	3:00.00	3:10.00

Notes: The HK Island and Kowloon Secondary Schools Regional Committee may amend the above standards upon request by the respective Management Committee. Sufficient notice will be given to school if such amendment is necessary.

GENERAL RULES OF INTER-SCHOOL TABLE-TENNIS CHAMPIONSHIPS

1. Unless otherwise stated, the rules of the ITTF shall apply.

2. SCORING AND PLACING

- 2.1 The New Swaythling Cup System of play shall be used.
- 2.2 Each team will consist of 3 players and each player plays against the other 3 players of the opposing team.
- 2.3 A minimum of 3 players must be present before a team can play.
- 2.4 A match shall be decided by the best of 5 sets. Each set will be a best of 3 games of 11 points.
- 2.5 2 points shall be awarded for winning a match, 1 point for losing and zero point for failing to honour a fixture.
- 2.6 If 2 teams tie on match points, the winner of the match between the two teams shall be awarded the higher position.
- 2.7 If 3 or more teams tie on points, only the match points score in matches involving such teams shall count, and the rate shall be scored as follows:

<u>Matches won</u>
Matches lost

- 2.8 If the tie still persists, the same scoring system shall be used for sets, games and finally points until the tie breaks.
- 2.9 Should the tie still persists, the positions of the teams shall be decided by drawing of lots. (The draw shall be made only if the tie affects promotion to the next round).

2.10 Order of play: <u>Set</u>	<u>1</u>	<u>2</u>	<u>3</u>	<u>4</u>	<u>5</u>
Home Team	A	B	C	A	B
Away Team	X	Y	Z	Y	X

3. COMPETITION BALLS

Competition balls will be provided by the Management Committee. **Double Fish Orange 40mm Three Stars Table Tennis Ball** has been adopted as the official ball.

4. Time-out Rule will not apply.

5. UNIFORM

- 5.1 All players in a team must wear **same colour (distinct difference from the colour of ball) short sleeves school P.E. uniform or playing shirts.**
- 5.2 All players must tuck their shirts into their shorts.
- 5.3 No jeans will be allowed.
- 5.4 Long P.E. trousers may be accepted when the weather is cold.
- 5.5 All players must wear socks and shoes. All shoes must be non-marking.

6. THE RACKET

Please refer to ITTF Rules

7. UMPIRES

- 7.1 Each participating team shall provide an umpire.
- 7.2 Failure to provide an umpire shall result in disqualification of the team.
- 7.3 Under no circumstances can teachers serve as umpires.
- 7.4 The umpire must wear umpire badge.
- 7.5 The duty officer-in-charge has the right to arrange any umpire for officiating.

8. WARM-UP

No player shall be allowed to use any table for warm-up once the competition is declared to start.

9. DISCIPLINE

- 9.1 Only players, umpires, and staff member-in-charge of teams shall be admitted into the competition area in order to ensure the smooth running of the competition.
- 9.2 The officials in-charge have the power to remove anyone from the competition centre who may interfere with the smooth running of the competition.
- 9.3 The staff member in charge of each team shall be responsible for the conduct of his / her team both on and off the competition centre.
- 9.4 When a player is sent off because of a serious misconduct, the official in-charge of the centre shall report the incident to the Management Committee for action.
- 9.5 Captains, coaches or staff member in-charge of teams must not disturb their players or their opponents by side-coaching.
- 9.6 Staff member-in-charge should instruct their players to keep the competition centre clean and tidy.

10. PROTESTS & APPEALS

- 10.1 Any queries and complaint should be directed to the official-in-charge on the day of competition and the In-charge will deal with the case accordingly.
- 10.2 Protests shall be lodged to the Convenor in writing through the Federation office within 3 working days after the match/game/incident took place.

11. INTERRUPTION OF PLAY

When a match cannot be completed as scheduled, the re-match shall continue from where it has been stopped using same players of the interrupted match.

GENERAL RULES OF INTER-SCHOOL TENNIS CHAMPIONSHIPS

1. Unless otherwise stated, the competition will be played according to the rules of ITF.

2. COMPETITION

2.1 Each team will consist of SIX players, forming 3 doubles pairs, 2 umpires (Home) /1 umpires (Away) and a teacher who is responsible for the players' conduct. Each team may have 2 reserves present.

2.2 Each pair plays one set against each pair of the opposing team, so that each pair plays three sets.

2.3 The order of play shall be as follows:

Set	Home Team	Away Team
1	1st pair	1st pair
2	2nd pair	2nd pair
3	3rd pair	3rd pair
4	2nd pair	1st pair
5	3rd pair	2nd pair
6	1st pair	3rd pair
7	3rd pair	1st pair
8	1st pair	2nd pair
9	2nd pair	3rd pair

2.4 A set may not go beyond 6-6. At 6-6 each pair scores half a point for its team in this match.

2.5 Only one deuce is played in any game, and the receiver should determine which side the server serve.

2.6 The team which wins 5 sets (or aggregate of half point scored in 2.4) first is the winner of the match.

2.7 Even though a team wins 5 sets before the 9 sets are completed, the remaining sets may be completed with mutual assent but the result will not be counted.

2.8 Two points will be awarded to the winner of a match. If it is a draw, each team is given one point. The team with highest aggregate wins the league.

2.9 If there is a tie in the league points at the end of the competition the following classifications shall apply:

i. If there are two teams tie in the league points, the winner of the match between the two teams involved will be placed in higher position. Should the match ends in a draw, the set average (total sets gain divided by total sets lost) from the results of all their matches played in the group will be taken into account. Should there is still a tie, games average will be taken into account. Should the tie still persist, play-off will be arranged to decide the final position.

ii. If more than two teams are equal in the league points, a second classification will be established taking into account only the results of the matches between the teams that are tied.

In the event that there are still teams tied after the second classification, then set average (total sets gain divided by total sets lost), taking into account only the results of the matches between the teams still tied, will be used to determine the placing.

If there are still teams tied, the placing will be determined using set average from the results of all their matches played in the group.

If there are still teams tied, the placing will be determined using games average from the results of all their matches played in the group.

If there are still teams tied, play-off matches will be arranged to determine final positions.

If at any stage, using the criteria in 2.9(ii), a multiple team tie is reduced to a tie involving only two teams, the procedure in 2.9(i), will automatically be applied. If it is reduced to a tie still involving more than two teams, the procedure beginning with first paragraph in 2.9 (ii), is repeated.

- 2.10 The winning team should send or fax one copy of result sheet to Federation office within 2 days of competition.
- 2.11 In case of injury where both teachers agree that the player should not play on, his opponents win that set by a walk-over, and a reserve can be substituted.
- 2.12 Either team may use two reserve at any time between sets. The player who is replaced may not play again in that match, even in the case of injury.
- 2.13 The away team remains on the same courts throughout the match.

3. REGISTRATION CARDS

A player without a registration card is not entitled to play. Prior to the start of the match, teachers should exchange line-ups and check the registration cards of the players.

4. HOME TEAM

- 4.1 The teacher of the home team is in charge of the match for that day.
- 4.2 When using public courts, the teacher should report at the booking office 15 minutes before the scheduled time of the match and sign for the courts.
- 4.3 Home Team should bring one set of result sheet and 2 tins of balls for the match. Two balls should be used on each court. The home team may keep all the balls at the conclusion of the match.

5. UMPIRES

- 5.1 The home team should provide 2 umpires and the away team 1 umpire. The teacher may serve as umpire if necessary.
- 5.2 The umpires should call out the point score after each point and the game score after each game. He should also use paper and pencil in keeping the score.

6. POSTPONEMENT & RE-ARRANGEMENT

- 6.1 Participating schools can request 2 no play dates during the tennis season. The convenor will try not to schedule any match on the request dates. No other request for postponement will be accepted.
- 6.2 If a match is postponed, forfeited, etc. at the start of play, the particulars should be written on three copies of score sheets, duly signed by both teachers. One copy should be sent or fax to the Federation office within 24 hours.

7. WALK-OVER

If the full team (as described in 2.1) fails to start the game by the official time, the opposing team will be awarded the 2 league points but the match must be played anyway if there are 6 players and a teacher from each team.

8. PROTEST

Protest shall be lodged to the convenor in writing through the Federation within 3 working days after the match took place.

9. BALLS

Dunlop Tennis Balls has been adopted as official tennis ball.

10. INTERRUPTION OF PLAY

In the case when a match cannot be completed as scheduled, the home team should report the case to the Federation Office within 2 working days of the match. If a re-arrangement is necessary, the match shall continue from where it has been stopped using same players of the interrupted match.

GENERAL RULES OF INTER-SCHOOL VOLLEYBALL CHAMPIONSHIPS

1. Unless otherwise stated, the competition will be played according to rules of FIVB.
2. **REFEREE**
The Volleyball Association of Hong Kong, China will be responsible for providing referees and scorer.
3. **SYSTEM OF COMPETITION**
 - 3.1 Two points will be awarded for a win, one point for a loss and zero point for failing to honour a fixture.
 - 3.2 If two teams tie on points, the winner of the match between the two teams shall be awarded the higher position.
 - 3.3 If three or more teams tie on points, their ranking will be decided by the quotient of sets gained divided by sets lost in the matches involving such teams. Should the tie still persist, 'Small Points' will be counted in the same manner.
 - 3.4 All matches will be played by 2 sets out of 3 system.
4. **UNIFORM**
 - 4.1 Except libero player, players in a team shall wear same colour and style vests with numbers on both side.
 - 4.2 Players' numbers shall be between 1 and 18.
 - 4.3 The numbers shall be placed in the centre part of both the front and back sides of players' shirts.
 - 4.4 A distinctive colour strip must appear under the front side number of team captain's vest.
5. **BALLS**
Both teams shall each supply a match ball that conforms to the rules of the game. The referee will decide which ball will be used for competition. A double walk over will be declared if both teams cannot supply a match ball.
6. **NET HEIGHTS**

Boy A - 2.35m	Girls A - 2.20m
Boy B - 2.30m	Girls B - 2.15m
Boy C - 2.20m	Girls C - 2.15m
7. **INTERRUPTION OF PLAY**
If any circumstance prevent the completion of a match, the following shall apply:
 - 7.1 The referee, duty officer are requested to report the case to the Management Committee.
 - 7.2 The result of the completed set/s will stand.
 - 7.3 Result of the interrupted set will be cancelled.
 - 7.4 The cancelled set/s will be replayed. School may use other players in the re-play.
8. **DISCIPLINE**
It is with much co-operation of Leisure & Cultural Services Department in providing facilities for volleyball competition. The Management Committee would like to see that this generosity is respected by participating schools. Teachers-in-charge are requested to note:-
 - 8.1 Players are restricted to use only the designated changing rooms, toilets & playing courts.

- 8.2 Centre-in-charge have the right to order any misbehaved player or spectator to leave the centre.
- 8.3 No competitor or spectator is allowed to wander around venue complex.
- 8.4 Centre should be kept clean and tidy.
- 8.5 Misbehaved student & team will be referred to the Disciplinary Committee for action.

9. POSTPONEMENT

- 9.1 Normally no request for postponement will be entertained.
- 9.2 However, school with very strong reason may apply for postponement. Such request must be addressed to the convenor in writing and reached the Federation office at least one week before the scheduled match. The Management Committee will consider the request but there is no guarantee that such request will automatically be accepted.
- 9.3 The school that claims the postponement will be responsible for arrangement of alternate time, date, venue and referees for the competition which must be acceptable to both the Management Committee and the opposing school.

10. PROTEST

Protest shall be lodged with the convenor in writing within 3 working days of the match concerned and the Protest shall be dealt with by the Management Committee at its own discretion.

11. CENTRE-IN-CHARGE

- 11.1 The staff member of the first named team on the fixture will be the duty officer of the match.
- 11.2 The centre-in-charge should see that score books are ready, nets on at appropriate height before the start of competition.
- 11.3 In case of rain or other unforeseen weather condition, the centre-in-charge can, in consultation with the referee, declare postponement of matches.
- 11.4 In consultation with referee, the centre-in-charge can have the authority to declare 'walk-over' if any irregularities occur.
- 11.5 Inform convenor in case of any postponement and/or walk-overs
- 11.6 Centres-in-charge can have the right to order any misbehaved competitor or spectator to leave the competition centre & report the case to the convenor for disciplinary action.
- 11.7 Make sure competitors will not misuse facilities of competition centre.
- 11.8 Liaise with referee in case of any problem arises.
- 11.9 Can have the right to check players' registration card in case of queries.

BY-LAWS & RULES

These By-Laws and Rules are applicable to all secondary and primary school sports events organised by the Hong Kong Schools Sports Federation.

In these By-Laws, unless otherwise stated:-

The Federation means the Hong Kong Schools Sports Federation, hereafter referred to as "The Federation".

The Board means the Board of the Hong Kong Schools Sports Federation, hereafter referred to as "The Board".

The Council means the Secondary School Sports Council or the Primary School Sports Council of the Hong Kong Schools Sports Federation, hereafter referred to as "The Council".

The Regional Committee means the HK Island and Kowloon Secondary Schools Regional Committee of the Hong Kong Schools Sports Federation, hereafter referred to as "The Regional Committee".

Area Committees mean various Secondary Schools and Primary Schools Area Committees of the Hong Kong Schools Sports Federation, hereafter referred to as "Area Committees".

The External Committee means the External School Sports Committee of the Hong Kong Schools Sports Federation, hereafter referred to as "The External Committee".

Member Schools mean the registered member Secondary and Primary Schools of the Hong Kong Schools Sports Federation, hereafter referred to as "Member Schools".

"Working days" - Saturday not included

CONTENT

- I Registration of Members
- II Participation
- III Penalties
- IV Appeal
- V Amendments and additions to By-Laws, Rules & Regulations

1. REGISTRATION OF MEMBERS

Rules

- 1.1 Registered students of member schools shall be eligible to take part in any competition organised/approved by the Area/Regional Committee except otherwise stated.
- 1.2 All registered members must comply with the registration procedure and requirements laid down by the Federation.
- 1.3 The accuracy of the date of birth together with other particulars of each student applying for registration shall be the responsibility of the Head of school to the best of his knowledge when he signs the registration forms. If teachers are authorized to sign the registration forms, schools are still held responsible for any irregularities committed by their teachers. Provided that a student satisfies the stated registration requirements, he/she shall be issued with an official registration card bearing his/her name and registration number for that Federation year.
- 1.4 A student registered by a member school can compete only for the said member school in the current school year provided that he/she remains a student of that school. During the course of a school year a student can transfer to a member school and compete for the school provided that he/she has not competed for the previous school. Schools admitting students in the middle of a school term must ensure that when registering such students with the Area/Regional Committee, they have not registered and competed for another school.
- 1.5 Schools when registering students shall be responsible for checking that such students are not barred from participation in inter-school sports activities organized by the Federation for that school season. Schools may request for information of barred students from the Federation secretariat.
- 1.6 A student registered in one grade must remain in that grade for that Federation year and shall not be allowed to compete in another grade unless authorized by the Area/Regional Committee (The authorization must be based on the fact that the student has not competed in the original grade in the school season.)
- 1.7 Primary School students are not allowed to register for any secondary schools competition, and vice versa.

Penalties

- 1.8 Any member schools whose student(s) and/or teacher(s) (or any other staff or authorized member(s) appointed by the school) violated the Rules and Regulations of the Federation are held responsible for such violation and shall be suspended from part or all activities, and shall be expelled from the Federation pending the decision of the Area/Regional Committee and the Board, and such cases shall be reported to the Education Bureau and the school board of the school concerned.
- 1.9 When a school violates the Registration By-Laws by negligence, results of the sport(s) of the grade(s) concerned shall be cancelled; schools be issued a warning letter.
- 1.10 When a school violates the Registration By-Laws by severe negligence, that is, for repeated carelessness or negligence or negligence involving more than one teacher and/or student, results of the sport(s) of the grade(s) concerned shall be cancelled, the teacher(s) being barred from being teacher in charge in all inter-school activities organized by the Federation for 1-2 years, and the school be issued a warning letter.
- 1.11 When a school violates the registration regulations on purpose, that is cheating, involving one teacher, results of the sport(s) concerned be cancelled, the teacher in charge of registration be barred from being teacher in charge for 2 years, the school be issued a warning and the Education Bureau be informed of the incident; students if found involved in the violation shall also be barred from participation in inter-school activities organized by the Federation for 1-2 years and such incidents be reported to the respective local

sports governing bodies. Depending on the severity of the violation the offending school shall be suspended from participation in that sports for 2 years including the year of offence.

- 1.12 When a school is found involved in a calculated violation that involves more than one teacher and/or student, results of the sport(s) concerned be cancelled. Teacher(s) involved be barred from being teacher(s) in charge of school teams for 2 years and the Education Bureau be informed of the incident, schools be suspended for 2 years including the year of offence, students if found involved shall also be barred from participation in inter-school activities organized by the Federation for at least 2 years, and such incidents be reported to the respective local sports governing bodies.
- 1.13 For repeated violations in registration regulations on purpose, the school be expelled from membership for 2-3 years including the year of offence and they need to re-apply for membership upon serving expulsion term, teachers and students if involved shall be barred from all inter-school activities organized by the Federation for the same period.
- 1.14 When a teacher is suspended from being teacher in charge of school teams, the penalty shall apply even if he/she has transferred to other member school during the suspended period.
- 1.15 When a student is suspended from participation in inter-school activities organized by the Federation, the penalty shall apply even if he/she has transferred to other member schools during the suspended period.
- 1.16 When a school is expelled from the Federation the school shall be required to re-apply again for membership and the Federation may or may not accept the application.

2. PARTICIPATION

- 2.1 For all sports every team must be accompanied by a staff member or an authorized member appointed by Head of School. He/she must remain with the team throughout the entire match/competition. Failure to comply with this regulation will result in the disqualification of the team from that match/competition. The team shall be deemed to have given a walk-over. In the case when a staff member is instructed by the referee or umpire to leave the competition area during match, the captain may serve as a staff member of the team for the remaining match. The result of the match shall stand. However, the school is responsible for any other consequence that may arise from the incidence.
- 2.2 The registration number of each player shall be quoted on the team list handed to the official-in-charge before each game. The team list must be signed by the staff member in-charge of the team.
- 2.3 Players/Competitors' registration cards must be presented to the appointed officials in the course of a game/competition. Each Competition/Management Committee will determine the procedure concerning the checking of registration cards subject to the approval of the Area /Regional Committee.
- 2.4 Any staff members in-charge or an authorized member appointed by Head of School may check any or all registration cards of an opposing team. Only one check is permissible and this may take place either before, during the interval or at the close of play/finish of an event. An appointed official must be present before any such check may be carried out.
- 2.5 Any team without the minimum number of players required for that particular game at the scheduled starting time shall be liable to the forfeiture of the points for the game and disciplinary action may be taken at the discretion of the Competition/Management Committee (cf.2.8)

- 2.6 Teams must be ready to start the competition at the scheduled starting time. Warming up should be done before the scheduled starting time.
- 2.7 The Competition/Management Committee, with the approval of the Area/Regional Committee, shall define the minimum number of players required for each sport and all participating schools shall be notified.

2.8 Walk-Over

2.8.1 If one team fails to turn up without prior notification (cf.2.8.3) the opposing team shall be awarded a walk-over provided that the opposing team had the minimum number of players present for the game. Explanation letter signed by the school head should be forwarded to the Federation Office within 3 working days.

2.8.2 A team fails to turn up without prior notification and to forward an explanation letter 3 working days after the game will be fined a sum of HK\$100.00 which is payable to the account of respective Area/Regional Committee.

2.8.3 Should both teams fail to turn up or be without the minimum number of players required for the game/match the game/match shall be considered play but no point shall be awarded.

2.8.4.1 Applicable in Secondary Schools

If any school gives 1 walk-over (group of or less than 4 teams) and 2 walk-overs (group of or more than 5 teams) in any grade of any sport, then that school will be debarred from further participation in that grade in that particular sport and the results of the games already played will be cancelled.

2.8.4.2 Applicable in Primary Schools

If any school gives 2 walk-overs in the same tier of competition, that school will be debarred from further participation in that grade in that particular sport and the results of the games already played will be cancelled. School concerned has the right to appeal on the decision of walk-over.

2.8.5 Notification of an intended walk-over must be received by the respective Competition/ Management Committee in writing at least 3 working days before the scheduled starting time of the game/competition.

2.9 Officials

Member schools will be required to provide officials to serve in competitions organized by the Federation and Area/Regional Committee. The arrangement of officials for competitions organized by Area/Regional Committee is as follows:.

Area/ Regional Committee	Event	Athletics	Swimming	Cross Country (Secondary Schools)
	Officials			
HK Island & Kln Secondary Schools	Officials provided by participating schools			
NT Secondary Schools	Officials provided by member schools of the Area Committee		Officials provided by participating schools	
HK Island & Kln Primary Schools	Officials provided by participating schools			—
NT Primary Schools	Invite officials from other Area Committees	Officials provided by participating schools		—

2.10 Players

All member schools shall make their registered student members available for selection for Inter-port or representative competition subject to parental approval.

2.11 Outside Competition

2.11.1 Participation by member schools in competition not sponsored by the Federation shall be permitted provided that such participation does not conflict with the objects of the Federation.

2.11.2 Failure to comply with the ruling of the Federation may debar the school from participating in any sport organised by the Area/Regional Committee.

2.11.3 Member schools shall require the permission of the External Committee of the Federation through the Area/Regional Committee to represent Hong Kong in any School International Sports Competitions.

2.12 Conduct

All member schools are responsible for the conduct of their teams and supporters.

2.13 Protest

Protests shall be lodged with the Convenor of the sport concerned in writing through the Federation office within 3 working days of the match/game/incident took place.

3. PENALTIES

3.1 The Competition/Management Committee shall have the power to deal with matters concerning students discipline of its own sport in accordance with the Rules & Regulations of the Area/Regional Committee. (All cases concerning discipline shall be dealt with by the Competition/Management Committee within 10 days of the time of the alleged offence).

3.2 All cases of serious disciplinary matters shall be referred to the Discipline Committee of the Area/Regional Committee. Disciplinary matters involving teachers will automatically be dealt with by the Executive Committee of the Area/Regional Committee.

3.3 Disciplinary matters relating to Schools Jing Ying Competitions shall be referred to the Secondary Schools Sports Council or the Primary Schools Sports Council.

3.4 Penalties shall be implemented by appropriate Committee and reported to relating Committees for implementation of penalties as when required. Such penalties shall be reported to respective National Sports Association.

3.5 In sports where the regulations include automatic suspension for certain offences, an appeal, accompanied by a cheque of 200 Hong Kong Dollars made payable to the Federation, can be made within 3 working days of the game/match to the Discipline Committee of the Area/Regional Committee. This fee will be refunded if the appeal is sustained.

4. APPEAL

4.1 The right to appeal is strictly confined to member schools.

4.2 For all competition matters the decision of the referee and/or the Committee responsible for the management of the event on the day of competition shall be final.

4.3 All appeals must be in writing and signed or countersigned by the head of the school concerned.

4.4 Every appeal must set out of the ground(s) on which it is based.

4.5 Appeal must be accompanied by a fee to be determined from time to time by the Board. Such fee is refundable if the appeal is sustained.

- 4.6 Executive Committee of Area/Regional Committee or Appeal Committee authorized by Area/Regional Committee will deal with appeal of member schools. The decision of the Executive Committee or the Appeal Committee is binding to member schools. Appeal, accompanied with appeal fee shall be made within 3 working days of the game/match to the Chairman of Executive/Appeal Committee of respective Area/Regional Committee and copied to respective Executive Secretary. The Secretariat will inform the school of the proper appeal arrangement.
- 4.7 There shall be a 4 level appeal mechanism;
- 4.7.1 To the Area/Regional Committee. The Area/Regional Committee shall deal with matters of appeals raised by member schools. The appeal fee is HK\$200.
- 4.7.2 To the Council if schools are not satisfied with the decision of the Area/Regional Committee. An appeal may be made to the Council within 3 working days from the date the decision is made and passed on to the school concerned. The Appeal fee is HK\$400.
- 4.7.3 To the Board. If still not satisfied with the decision of the Council, a final appeal shall be made to the Board of the Federation within 3 working days from the date the decision is made and passed on to the school concerned. The Appeal fee is HK\$800.
- 4.7.4 To the AGM of the Federation in the case of expulsion of school and such appeal should be launched within 3 working days from the date the decision on expulsion is made and passed on to the school concerned. The appeal fee is HK\$1600.
- 4.7.5 Should decisions of the Area/Regional Committee, the Council or the Board concern competition programmes of the school involved and that such programmes have been scheduled within the period prior to the deadline for appeal, all these programmes are subject to the above decisions, i.e. cancellation, deletion or rearrangement etc., unless the school concerned has applied for and granted with temporary permission to compete in such programmes. Such application must be based on sufficient grounds.
- 4.7 In the case of programmes organised by the External Committee, an appeal shall be made to the External Committee. If schools are not satisfied with the decisions of the External Committee, a second appeal to the Council as the case may be. If schools are still not satisfied, then a final appeal to the Board.

5. AMENDMENTS AND ADDITIONS TO BY-LAWS, RULES & REGULATIONS

The Area/Regional Committee is empowered at any time to amend and/or add to the By-Laws, Rules and Regulations governing all sports or the special rules governing a particular sport at any time with the approval of the Board and the Council. All member schools will be notified of such changes.

COLLECTIVE PERSONAL ACCIDENT INSURANCE POLICY

1. INTRODUCTION

- 1.1 The Collective Personal Accident Insurance Policy was introduced in the 1990/91 season. Coverage has been extended to all teachers in charge or staff since 1991/92 season. Treatments by Chinese Bone Setters can also be accepted.
- 1.2 All member schools are included in the Policy.
- 1.3 Member schools are reminded that only students officially registered in the Federation will be protected under this Policy. Non-registered student will not be protected. Premium has been incorporated in the student registration fee.
- 1.4 Insurance Company: Royal & Sun Alliance Insurance plc.

2. DETAILS OF COVER

- 2.1 Cover: During the period the insured person is participating in activities organised/sponsored by the Hong Kong Schools Sports Federation which include the direct journey between the residence and/or school of the insured person to the place where the activity is to be held.
- 2.2 Insured: Hong Kong Schools Sports Federation (The Federation)
- 2.3 Person: From 1st September to 31 August the following year.
- 2.4 Activities Covered: All competitions, trainings and other activities organised/sponsored by the Federation or by various Councils and Committees of the Federation in the whole territory of Hong Kong. Inter-Port/International activities organised outside Hong Kong are also covered.
- 2.5 Insured Person: All registered student members & / or student officials / helpers invited by the Federation and Team lead teachers & / or competition teachers / officials.
- 2.6 Age Limit: 70 years
- 2.7 Benefits: Death HK \$30,000
Permanent Disablement of HK\$60,000
Medical Expenses (see Explanatory Notes for details) \$2,500 per person per year with HK\$100 deductible per case.
- 2.8 This Policy is extended to provide to insured person below Death Benefit resulting from or contributed by illness (of which the insured person, his/her family and school have no knowledge) whilst participating in the activities organised by the Federation. Benefit per insured person is HK\$15,000.00.
- 2.9 Limit of company's Liability in respect of any accident: HK\$8,000,000.00

EXPLANATORY NOTES

Medical expenses per injury will mean that, if for a number of visits to doctor(s) for treatment of the injury arising from the same accident, he/she is eligible to claim a maximum of HK\$2,500 with the amount of deductible of HK\$100 per claim. Chinese Bone Setters will also be included provided that they are members of the Chinese Medical Association of Hong Kong (香港中醫師公會) and also subject to the limits that (i) Maximum benefit per injury HK\$1,000; with HK\$150 being deductible; (ii) Maximum amount per visit HK\$150 and (iii) Permanent Disablement benefit shall not apply.

3. CLAIM PROCEDURES

- 3.1 The insured is the Hong Kong Schools Sports Federation and the Federation will file in claims on behalf of schools. To speed up the claim process, schools should immediately inform the Federation office by phone at 2711 9182 in case of any accident. Schools will be asked to fill in a form with information on names of claimant and details of the accident.
- 3.2 Schools should forward the claim form duly completed together with relevant medical receipts to the Federation office within 3 months of the accident. No claims can be processed if submitted beyond the time frame.
- 3.3 Since only one claim per accident is allowed, for injuries which require more than one visit to doctors, schools may send in such doctor's receipts when the injured is fully recovered. Of course, claim should be made at once when the medical expenses has already exceeded the insured medical benefit of HK\$2,500.
- 3.4 Claims will be payable to the Federation which in turn will pay the school or the injured direct. In the latter case school should provide the Federation office with the name of payee when sending in doctor's receipts.

4. INQUIRIES

- 4.1 Please contact Miss Lin of the Federation office at 2711 9670 for claim forms, inquiries and assistance.

BOCHK Bauhinia Bowl Award

1. The BOCHK Bauhinia Bowl Award is the annual award to member secondary schools of the Hong Kong Island and Kowloon Secondary Schools Regional Committee who qualify under the rules set out below. The Regional Committee has full power to manage the Award and to revise the rules governing the Award.
2. The BOCHK Bauhinia Bowl Award is sponsored by Bank of China (Hong Kong) Limited.

3. TYPE OF SCHOOLS

The BOCHK Bauhinia Bowl Award will be awarded to the following three types of schools separately.

- a. Boys Schools
- b. Girls Schools
- c. Coeducational Schools

In case of doubt in classifying a member school to one of the above categories because of a special situation, the Regional Committee will make the final decision on classification. However, schools concerned will be welcomed to express their views to the Regional Committee either by letter or presence at a Committee Meeting for this purpose.

4. **THE AWARDS** - The Awards are divided into two sections:

Section One - BOCHK Bauhinia Bowl

Trophies will be awarded to schools achieving the best all-round performance from all sporting events organised by the Regional Committee each year. A total of 17 trophies will be awarded each year.

The trophies are as follows:-

- | | |
|--|-------------------------|
| (1) BOCHK Bauhinia Bowl (Champion) | - Boys Schools |
| (2) BOCHK Bauhinia Bowl (Second) | - Boys Schools |
| (3) BOCHK Bauhinia Bowl (Third) | - Boys Schools |
| (4) BOCHK Bauhinia Bowl - The Most Progressive Boys School | - Boys Schools |
| (5) BOCHK Bauhinia Bowl (Champion) | - Girls Schools |
| (6) BOCHK Bauhinia Bowl (Second) | - Girls Schools |
| (7) BOCHK Bauhinia Bowl (Third) | - Girls Schools |
| (8) BOCHK Bauhinia Bowl - The Most Progressive Girls School | - Girls Schools |
| (9) BOCHK Bauhinia Bowl (Champion) | - Coeducational Schools |
| (10) BOCHK Bauhinia Bowl (Second) | - Coeducational Schools |
| (11) BOCHK Bauhinia Bowl (Third) | - Coeducational Schools |
| (12) BOCHK Bauhinia Bowl (Fourth) | - Coeducational Schools |
| (13) BOCHK Bauhinia Bowl (Fifth) | - Coeducational Schools |
| (14) BOCHK Bauhinia Bowl (Sixth) | - Coeducational Schools |
| (15) BOCHK Bauhinia Bowl (Seventh) | - Coeducational Schools |
| (16) BOCHK Bauhinia Bowl (Eighth) | - Coeducational Schools |
| (17) BOCHK Bauhinia Bowl - The Most Progressive Coeducational School | - Coeducational Schools |

Section Two - BOCHK Bauhinia Bowl Sportsboy/Sportsgirl of the Year

These statuette trophies will be awarded to the individual who has contributed greatly to his/her schools' sports in general and has shown outstanding ability in the field of sport during the year. In addition to good all-round achievement in sports, the candidate for the trophy must show a high standard of sportsmanship on and off the field. The candidate must have shown a willingness to help others, some kind of organising capacity, a sense of fairplay and must be genuinely interested in furthering the spirit of competition and esprit-de-corps between member schools and Hong Kong Sports in general.

Bank of China (Hong Kong) Limited has very generously offered a scholarship to each Sportsboy and Sportsgirl of the year.

The trophies for sportsboy/girl are as follows:

- (1) Sportsboy of the Year - Boys Schools
- (2) Sportsgirl of the Year - Girls Schools
- (3) Sportsboy of the Year - Coeducational Schools
- (4) Sportsgirl of the Year - Coeducational Schools

5. CONDITIONS OF THE BOCHK Bauhinia Bowl Award

Section One -

(A) Qualifications to compete

All competing schools must be members of the Regional Committee and players participating must be properly registered . Non payment of subscription fee will exclude the school from the competition. Schools must compete only in the section of the Award for which their types of schools are entitled to enter - either boys, girls or coeducational.

(B) How Winning Schools are Selected:-

Champion - This trophy will be awarded to the school earning the highest number of points throughout the season.

Second - This trophy will be awarded to the school earning the second highest number of points throughout the season.

Third to Eighth - These trophies will be awarded to schools earning the third to eighth highest number of points throughout the season.

Most Progressive - This trophy will be awarded to the school which, in the opinion of the Regional Committee, has shown most improvement in encouraging participation by students in Inter-school sports during the past year. The school's achievement in the preceeding years will also be considered.

In order to assess school's performance in all field of sports, the Regional Committee has decided to separate the Inter-school sports into 4 groups:-

Group A	1. Athletics 2. Cross Country	3. Swimming 4. Life Saving	
Group B	1. Basketball 2. Football 3. Handball	4. Volleyball 5. Girls Football 6. Softball	7. Beach Volleyball
Group C	1. Badminton 2. Squash	3. Table Tennis 4. Tennis	
Group D	1. Fencing 2. Hockey 3. Netball	4. Rugby 5. Gymnastics	

The best 2 scoring sports from each group will be considered, i.e. a maximum of 8 sports from the above 4 groups will determine school's performance. Higher score will mean distinct advantage in winning the most progressive award.

Besides the actual performance, the Regional Committee will also take the following points into consideration when selecting the most progressive school:-

- i) Past performance, results will be used to compare with the overall achievement of school in that current year in order to determine whether the school has made substantial progress.
- ii) The school's attitude in sports both on and off the field.
- iii) The school's capability of participation in inter-school sports, i.e. facilities, size, location, possible sports entered etc.
- iv) Schools in top 3 positions will normally not be considered for the Most Progressive Award.

(C) Method of Earning Points

- (1) The Regional Committee will announce in August/September each year which sports will be included in the BOCHK Bauhinia Bowl Award for the following season. Points will be awarded for the following sports competitions:

Secondary	Boys	Girls
Athletics	ABC	ABC
Badminton	ABC	ABC
Basketball	ABC	ABC
Beach Volleyball	Open	Open
Cross Country	ABC	ABC
Fencing	Open	Open
Football	ABC	--
Handball	ABC	AB Combined C
Hockey	Open	AC
Netball	--	ABC
Rugby	ABC	--
Squash	Open	Open
Swimming	ABC	ABC
Table Tennis	ABC	ABC
Tennis	Open	Open
Volleyball	ABC	ABC
Life Saving	Overall	Overall
Gymnastics	Overall	Overall
Softball	Open	Open
Girls Football	--	Open

- (2) If there are different grades in a sport, points will be awarded to each grade in full. In the case of only an open league being organised, points will still be awarded.
- (3) Number of points awarded to each grade/sport is as follows:

Division One 1st 2nd 3rd 4th 5th 6th 7th 8th 9th 10th 11th 12th

Total no. of teams participating in all Divisions:

Less than 2 teams	0											
2-3 teams	1											
4 teams	2	1										
5-6 teams	3	2	1									
7-8 teams	4	3	2	1								
9-10 teams	5	4	3	2	1							
11-12 teams	6	5	4	3	2	1						
13-14 teams	7	6	5	4	3	2	1					
15-16 teams	8	7	6	5	4	3	2	1				
17-18 teams	9	8	7	6	5	4	3	2	1			
19-20 teams	10	9	8	7	6	5	4	3	2	1		
21-22 teams	11	10	9	8	7	6	5	4	3	2	1	
23 teams or more	12	11	10	9	8	7	6	5	4	3	2	1

Division Two

Total no. of teams participating in Div. II and Div. III :

	1st	2nd	3rd	4th	5th
4 teams	2	1			
5 - 6 teams	3	2	1		
7 - 8 teams	4	3	2	1	
9 teams or more	5	4	3	2	1

Division Three

Top three teams in each grade (ABC) will be awarded points as follows: -

Winners	- 3 points
Second	- 2 points
Third	- 1 point

- (4) In an open graded competition where one school is permitted by the Management Committee to enter more than one team, only the most successful of these teams may score for their school. The other team or teams from this one school will not be counted, when computing the position and score for other school entered in the competition. In such cases, the number of participating schools will be interpreted as the number of schools taking part rather than the number of teams entered.
- (5) For those competitions that involve schools from New Territories, the total number of teams is the total number of teams coming from Hong Kong Island and Kowloon, excluding the number of schools from New Territories.
- (6) If the Regional Committee decides to run a particular sport separately in Hong Kong Island and Kowloon, points will be awarded in each area competition as above.
- (7) When two teams tie in the league, points for the place for which they tie will be awarded to each team in full.

- (8) For Athletics and Swimming, points will be calculated from schools who have a minimum of 4 competitors actually competing in each grade in the sport. (Schools with less than 4 competitors can still compete in these sports but their entries will not affect the points awarded for the BOCHK Bauhinia Bowl Award).

Section Two - BOCHK Bauhinia Bowl Sportsboy/Sportsgirl of the year

(A) **Qualification to compete:**

Schools (all three types - boys, girls and coed) that participate in Inter-school sports competition are eligible to take part in this award. Nomination will be opened to A & B grade athletes and priority will be given to A grade competitor.

(B) **Method of Selecting a Candidate for the Individual Awards:**

The schools, in nominating the individual who has contributed most to sports during the year, are asked to consider the following points:-

- (a) Achievement in Sport
- i) Only the sports organised by the HKSSF shall count towards the award.
 - ii) Only the results achieved by the candidate during the year shall count.
 - iii) Candidate shall be all-round athlete.
 - iv) In order to be "all-rounder", nominee shall participate in 2 or more sports during the season. Preference will be given to nominee participating in sports of different nature. Classification of Inter-school sports is as follows:-

Nature	Sports
Track & Field	Athletics, Cross Country
Aquatic	Life Saving, Swimming
Racket Games	Badminton, Squash, Table Tennis, Tennis
Ball Games	Basketball, Beach Volleyball, Football, Handball, Girls Football, Softball, Volleyball,
Others	Archery, Fencing, Gymnastics, Hockey, Indoor Rowing, Netball, Rugby, Tenpin Bowling

- v) Achievement in sport events organised by other NSAs should also be indicated.
- (b) Sportsmanship
The candidate's attitude to sport both on and off the field of play must be assessed - his sense of fairplay and willingness to help others should be considered.
- (c) Organising capacity
The candidate's qualities as an organiser in connection with sporting activities within the school and possibly at inter-school level should be taken into consideration.
- (C) The Regional Committee will select the Sportsboy/Sportsgirl of the year from the nominations submitted by member secondary schools.
- (D) Interview for short-listed candidates may be required in case achievements of candidates are close.
- (E) The Sportboy / Sportgirl will each receive a trophy, a replica and scholarship of HK\$10,000 sponsored by BOCHK Charitable Foundation.

BOCHK Bauhinia Bowl Award

Outstanding Athlete Award

1. OBJECTIVES

The establishment of the Outstanding Athlete award is to recognize the achievement of athletes who have devoted much of their effort in one single sport. Unlike the Sportsboy / Sportsgirl of the Year Award, Outstanding Athletes need not necessarily be all-round athletes, but must achieve a leading role and significant performance in one single sport.

2. ORGANIZERS

Organized by the Hong Kong Island & Kowloon Secondary Schools Regional Committee of the Hong Kong Schools Sports Federation and sponsored by BOCHK Charitable Foundation.

3. AWARDS

3.1 The Awards are as follow:

Athletics	One Boy	One Girl
Badminton	One Boy	One Girl
Basketball	One Boy	One Girl
Beach Volleyball	One Boy	One Girl
Cross Country	One Boy	One Girl
Fencing	One Boy	One Girl
Football	One Boy	-
Handball	One Boy	One Girl
Hockey	One Boy	One Girl
Netball	-	One Girl
Rugby	One Boy	-
Squash	One Boy	One Girl
Swimming	One Boy	One Girl
Table Tennis	One Boy	One Girl
Tennis	One Boy	One Girl
Volleyball	One Boy	One Girl

Total: 29 awards

4. QUALIFICATION TO COMPETE

- 4.1 Member schools of the Hong Kong Island and Kowloon Secondary Schools Regional Committee are eligible to nominate their athletes to compete in this award.
- 4.2 Each school can nominate one boy and / or one girl per sport.
- 4.3 Nomination will be opened to all registered students, but priority will be granted to A Grade athletes in case achievements of nominees are too close.
- 4.4 An athlete can be nominated for more than one sport.

5. SELECTION CRITERIA

- 5.1 Only results achieved by the nominee in the sport he/she has been nominated shall count.
- 5.2 Only results achieved in the year of nomination (1st May to 30th April the following year) shall count.

- 5.3 Nominees must participate in Inter-school sports competition organized by the Regional Committee for the sport he/she has been nominated with excellent performance.
- 5.4 Results achieved in Jing Ying Tournaments, Interport Events, other local and international competitions shall count.
- 5.5 Normally the Award Committee will pay more attention to results achieved in Inter-school, Jing Ying, Schools Interport and Schools International competition.
- 5.6 For individual sports, like Athletics, Swimming, Cross Country, results / ranking achieved in individual events should be listed in full for examination.
- 5.7 For team sports like Badminton, Table Tennis, Tennis, Fencing, Squash, scores of games / sets played by the nominee will be considered in details.
- 5.8 For team sports like Football, Basketball, Beach Volleyball, Handball, Volleyball, Netball, Rugby, Hockey, results should include the playing position of the nominee in the team and to what extent the nominee has contributed to the success of the team. The number of disciplinary records issued to both the team and the nominee should also be listed in details for examination.
- 5.9 The nominee's attitude to sport both on and off the field of play will be assessed - his/her sense of fair play and willingness to help others should be considered.
- 5.10 The nominee's quality as a sport organizer and leader of the school team should be taken into consideration.

6. NOMINATION AND SELECTION PROCEDURE

- 6.1 Nomination Forms are ONLY available at the HKSSF website (<http://www.hkssf-hk.org.hk/hk/sec/bauhinia-bowl.htm>). Nomination Forms can be obtained from the Federation Office upon request.
- 6.2 School Heads / P. E. Panel should complete the form with detailed description of the performance of the nominee. All Nomination Forms must be forwarded to the Federation Office before the deadline.
- 6.3 Respective Management Committees will preliminarily screen nominations.
- 6.4 Screened nominations will be forwarded to the Award Committee for final selection. Prominent persons and representatives from respective National Sport Associations will be invited to provide comments.

7. AWARDS

- 7.1 Outstanding Athletes will each receive a trophy as well as a scholarship of HK\$1,000 sponsored by BOCHK Charitable Foundation.
- 7.2 The Prize Presentation will be held together with the BOCHK Bauhinia Bowl Award Presentation.

LCSD Sporting Facilities for Inter-School Competition

校際運動比賽使用康樂及文化事務署場地一覽表

District	Venue & Address	場地及地址	電話
中 西 區 Central & Western	Hong Kong Park Sports Centre 29 Cotton Tree Drive	香港公園體育館 紅棉路 29 號	2521 5072
	Hong Kong Squash Centre 23 Cotton Tree Drive	香港壁球中心 紅棉路 23 號	2521 5072
	Shek Tong Tsui Sports Centre 5/F Shek Tong Tsui Municipal Services Building 470 Queen's Road West	石塘咀體育館 皇后大道西 470 號 石塘咀市政大廈 5 樓	2858 0541
	Sheung Wan Sports Centre 11/F, Sheung Wan Municipal Services Building 345 Queen's Road Central	上環體育館 皇后大道中 345 號 上環市政大廈 11 樓	2853 2574
	Smithfield Sports Centre 4/F Smithfield Municipal Services Building 12K Smithfield Road Kennedy Town, Western	士美非路體育館 西區士美非路 12 號 K 士美非路市政大廈 4 樓	2855 7321
	Sun Yat Sen Memorial Park Sports Centre 18 Eastern Street North Sai Ying Pun	中山紀念公園體育館 西營盤東邊街北 18 號	2858 2493
東 區 Eastern	Chai Wan Sports Centre Yee Shun Street, Chai Wan	柴灣體育館 柴灣怡順街	2897 9144
	Island East Sports Centre 52 Lei King Road Sai Wan Ho	港島東體育館 西灣河鯉景道 52 號	2151 4070
	Java Road Sports Centre 3/F Java Road Municipal Services Building 99 Java Road, North Point	渣華道體育館 北角渣華道 99 號 渣華道市政大廈 3 樓	2516 9415
	Quarry Bay Sports Centre 7/F Quarry Bay Municipal Services Building 38 Quarry Bay Street, Quarry Bay	鯽魚涌體育館 鯽魚涌街 38 號 鯽魚涌市政大廈 7 樓	2562 0374
	Sai Wan Ho Sports Centre 2/F, 111 Shaukeiwan Road, Sai Wan Ho	西灣河體育館 香港西灣河 筲箕灣道 111 號 2 樓	2569 7330
	Siu Sai Wan Sports Centre 2/F Siu Sai Wan Complex 15 Siu Sai Wan Road	小西灣體育館 小西灣道 15 號 小西灣綜合大樓二樓	3427 3121
	Victoria Park Hing Fat Street Causeway Bay	維多利亞公園 銅鑼灣興發街	2570 6186

District	Venue & Address	場地及地址	電話
南區 Southern	Aberdeen Sports Centre 6/F Aberdeen Municipal Services Building 203 Aberdeen Main Road	香港仔體育館 香港仔大道 203 號 香港仔市政大廈 6 樓	2555 8909
	Aberdeen Sports Ground 108 Wong Chuk Hang Road Aberdeen	香港仔運動場 香港仔黃竹坑道108號	2552 6043
	Ap Lei Chau Sports Centre 8 Hung Shing Street Ap Lei Chau	鴨脷洲體育館 鴨脷洲洪聖街 8 號	2554 0832
	Wong Chuk Hang Sports Centre 168 Wong Chuk Hang Road Aberdeen	黃竹坑體育館 香港仔黃竹坑道 168 號	2553 6663
	Wong Chuk Hang Recreation Ground Wong Chuk Hang Road, Aberdeen	黃竹坑遊樂場 香港仔黃竹坑道	2555 0103
灣仔 Wanchai	Causeway Bay Sports Ground Causeway Road	銅鑼灣運動場 高士威道	2890 5127
	Happy Valley Recreation Ground 1 Sports Road Happy Valley	跑馬地遊樂場 跑馬地體育路 1 號	2895 1523
	Harbour Road Sports Centre 27 Harbour Road Wanchai	港灣道體育館 灣仔港灣道 27 號	2827 9684
	Hong Kong Tennis Centre 133 Wong Nai Chung Gap Road	香港網球中心 黃泥涌峽道133號	2574 9122
	Lockhart Road Sports Centre 10/F Lockhart Road Municipal Services Building 225 Hennessy Road Wanchai	駱克道體育館 灣仔軒尼詩道 225 號 駱克道市政大廈 11 樓	2879 5521
	Queen Elizabeth Stadium 18 Oi Kwan Road Wanchai	伊利沙伯體育館 灣仔愛群道18號	2591 1331
	So Kon Po Recreation Ground 55 Caroline Hill Road So Kon Po	掃桿埔運動場 掃桿埔 加路連山道 55 號	2576 5132
	Southern Playground Luard Road, Wanchai	修頓遊樂場 灣仔盧押道	2527 8032
	Wanchai Park Cross Lane Wanchai	灣仔公園 灣仔交加里	2879 5602
Wan Chai Sports Ground 20 Tonnochy Road Wanchai	灣仔運動場 灣仔杜老誌道 20 號	2827 6987	

District	Venue & Address	場地及地址	電話
九龍城 Kowloon City	Fat Kwong Street Sports Centre 18 Good Shepherd Street, Ho Man Tin	佛光街體育館 何文田牧愛街 18 號	2712 2652
	Homantin East Service Reservoir Playground Fat Kwong Street, Homantin	東何文田配水庫遊樂場 何文田佛光街	2760 0782
	Homantin Park 1 Chung Yee Street, Kowloon	何文田公園 九龍忠義街一號	2762 7837
	Homantin Sports Centre 1, Chung Yee Street, Ho Man Tin	何文田體育館 何文田忠義街 1 號	2762 7837
	Hung Hom Municipal Services Building Sports Centre 3/F, Hung Hom Municipal Services Building, 1 Ma Tau Wai Road, Hung Hom	紅磡市政大廈體育館 紅磡馬頭圍道11號 紅磡市政大廈3樓	2765 0586
	Junction Road Park 195 Junction Road, Kowloon Tong	聯合道公園 九龍塘聯合道 195 號	2336 4638
	Kowloon City Sports Centre 3/F Kowloon City Municipal Services Building 100 Nga Tsin Wai Road, Kowloon City	九龍城體育館 九龍城衙前圍道 100 號 市政大廈三樓	2716 1007
	Kowloon Tsai Park 13 Inverness Road Kowloon City	九龍仔公園 九龍城延文禮士道 13 號	2336 7878
	Tokwawan Sports Centre 66 Ha Heung Road, To Kwa Wan	土瓜灣體育館 土瓜灣下鄉道 66 號	2364 9285
觀塘 Kwun Tong	Chun Wah Road Sports Centre Top Floor, Lok Ngar Court Carpark 50 Chun Wah Road Ngau Tau Kok	振華道體育館 牛頭角振華道50號 樂雅苑停車場頂樓	2754 1681
	Hui Kwong Street Sports Centre 2 Hui Kwong Street, Kwun Tong	曉光街體育館 曉光街二號	2347 0384
	Kowloon Bay Playground Kai Lok Street Kowloon Bay	九龍灣遊樂場 九龍灣啟樂街	2750 9539
	Kowloon Bay Sports Centre 15 Kai Lok Street, Kowloon Bay	九龍灣體育館 九龍灣啟樂街 15 號	2750 9539
	Lam Tin South Sports Centre 170 Pik Wan Road, Lam Tin	藍田(南)體育館 藍田碧雲道170號	2379 9254
	Lei Yue Mun Sports Centre 2/F, Lei Yue Mun Municipal Services Building, 6 Lei Yue Mun Path, Yau Tong	鯉魚門體育館 油塘鯉魚門徑 鯉魚門市政大廈二樓	2349 3954
	Ngau Tau Kok Road Sports Centre 183 Ngau Tau Kok Road 3/F Ngau Tau Kok Municipal Services Building Ngau Tau Kok	牛頭角道體育館 觀塘牛頭角道 牛頭角街市大廈 4 樓	2756 3466
	Shun Lee Tsuen Sports Centre Shun Lee Tsuen Road Kwun Tong	順利邨體育館 觀塘順利邨道	2951 4136

District	Venue & Address	場地及地址	電話
旺角 Mongkok	Boundary Street Recreation Ground 200 Sai Yee Street Mong Kok	界限街運動場 旺角洗衣街 200 號	2380 9751
	Boundary Street Sports Centre No.1 200 Sai Yee Street Mong Kok	界限街體育館 旺角洗衣街 200 號	2302 1279
	Fa Yuen Street Sports Centre 13/F Fa Yuen Street Municipal Services Building 123A Fa Yuen Street, Mong Kok	花園街體育館 旺角花園街 123A 花園街市政大廈 13 樓	2395 1501
	Tai Kok Tsui Sports Centre 6/F Tai Kok Tsui Municipal Services Building 63 Fuk Tsun Street Tai Kok Tsui	大角咀體育館 大角咀福全街63號 大角咀市政大廈6樓	2393 1084
深水埗 Sham Shui Po	Cheung Sha Wan Sports Centre J/o Hing Wah Street & Cheung Sha Wan Road	長沙灣體育館 興華街與長沙灣道交界	2741 7287
	Cornwall Street Squash & Table Tennis Centre J/O Cornwall Street & Tat Chee Avenue Kowloon Tong	歌和老街壁球及 乒乓球中心 深水埗歌和老街/ 達之路交界	2337 4392
	Fa Hui Playground 101 Boundary Street Sham Shui Po	花墟公園 深水埗界限街 101 號	2741 4044
	Lai Chi Kok Park 1 Lai Wan Road, Lai Chi Kok	荔枝角公園 荔枝角荔灣灣一號	2370 9187
	Lai Chi Kok Park Sports Centre 1 Lai Wan Road, Lai Chi Kok	荔枝角公園體育館 荔枝角荔灣灣一號	2745 2796
	Pei Ho Street Sports Centre 5/F Pei Ho Street Municipal Services Building 333 Ki Lung Street, Shamshuipo	北河街體育館 深水埗基隆街333號 北河街市政大廈五字樓	2729 4237
	Shek Kip Mei Park Sports Centre 290 Nam Cheong Street Sham Shui Po	石硤尾公園體育館 深水埗南昌街 290 號	2784 7694
	Shek Kip Mei Park Stage III 290 Nam Cheong Street Shek Kip Mei	石硤尾公園第三期 九龍石硤尾南昌街 290 號	2777 1540
Tai Hang Tung Recreation Ground J/o Tai Hang Tung Road & Boundary Street, Sham Shui Po	大坑東遊樂場 深水埗大坑東道 界限街交界	2777 8946	
西貢 Sai Kung	Po Hong Park Wan Lung Road Tseung Kwan O	寶康公園 西貢將軍澳運隆路	2191 1561
	Po Tsui Park 1 Po Hong Road Tseung Kwan O	寶翠公園 西貢將軍澳 寶康路1號	2703 7231
	Tseung Kwan O Sports Centre 9 Wan Lung Road Tseung Kwan O	將軍澳體育館 西貢將軍澳 運隆路 9 號	2701 2317

District	Venue & Address	場地及地址	電話
油 尖 Yau Tsim	King's Park Hockey Ground 2-6 Wylie Road, Yau Ma Tei	京士柏曲棍球場 油麻地衛理道 2-6 號	2302 1280
	King's Park Tennis Court 15 King's Park Rise King's Park, Yau Ma Tei	京士柏網球場 油麻地京士柏道 15 號 京士柏公園	2385 8985
	Kwun Chung Sports Centre 5/F-7/F., 17 Bowring Street Jordon, Yau Ma Tei	官涌體育館 油麻地佐敦實靈街17號 官涌市政大廈五樓至七樓	2302 1274
	Kowloon Park Sports Centre 22 Austin Road, Tsim Sha Tsui	九龍公園體育館 尖沙咀柯士甸道 22 號	2724 3494
黃 大 仙 Wong Tai Sin	Choi Hung Road Playground 150 Choi Hung Road San Po Kong	彩虹道遊樂場 新蒲崗彩虹道 150 號	2326 2517
	Choi Hung Road Sports Centre Sheung Hei Street, Wong Tai Sin	彩虹道體育館 黃大仙雙喜街	2326 2714
	Chuk Yuen Sports Centre Chuk Yuen North Estate Chuk Yuen Road, Wong Tai Sin	竹園體育館 黃大仙竹園道竹園北邨	2324 3960
	Kai Tak East Playground 30 Luk Hop street San Po Kong	東啟德遊樂場 九龍新蒲崗六合街30號	2326 9940
	Kai Tak East Sports Centre 30 Luk Hop Street San Po Kong	東啟德體育館 新蒲崗六合街 30 號	2326 9940
	Lok Fu Recreation Ground Heng Lam Street Wong Tai Sin	樂富遊樂場 黃大仙杏林街	2338 0137
	Ma Chai Hang Recreation Ground 30 Ma Chai Hang Road Wong Tai Sin	馬仔坑遊樂場 黃大仙馬仔坑道30號	2351 7456
	Morse Park Sports Centre 40 Fung Mo Street Wong Tai Sin	摩士公園體育館 黃大仙鳳舞街 40 號	2326 2207
	Ngau Chi Wan Sports Centre 11 New Clear Water Bay Road Ngau Chi Wan Complex Wong Tai Sin	牛池灣體育館 黃大仙清水灣道 11 號 牛池灣市政大廈	2327 4915
	Po Kong Village Road Park (Phase I) Po Kong Village Road, Diamond Hill	蒲崗村道公園 鑽石山蒲崗村道	2320 6140
	Po Kong Village Road Sports Centre 120 Po Kong Village Road Wong Tai Sin	蒲崗村道體育館 黃大仙蒲崗村道 120 號	2325 3585
	Shek Ku Lung Road Playground 18 Lok Sin Road, Wong Tai Sin	石鼓壠道遊樂場 黃大仙樂善道 18 號	2383 9024

鳴謝

本會主辦之校際及全港各項運動比賽，得以順利完成，實有賴教育局及康樂及文化事務署贊助行政活動經費與及提供各項體育設施、各體育總會提供技術支援、謹此致謝；並向下列各機構及贊助商致意：

屈臣氏蒸餾水

德成運動用品公司

恆亞國際有限公司

香港大塚製藥有限公司

太古可口可樂香港

香港高爾夫球會

HK ISLAND AND KOWLOON SECONDARY SCHOOLS REGIONAL COMMITTEE

of

THE HONG KONG SCHOOLS SPORTS FEDERATION

wishes to acknowledge its appreciation to the

Education Bureau

Leisure & Cultural Services Department

Watsons Water

Co-Service Sports Equipment Co.

Hanasia International Ltd

Otsuka Pharmaceutical (H.K.) Ltd.

Swire Coca-Cola HK

The Hong Kong Golf Club

for their support in providing

facilities and programme subsidy for

Inter-School sports competitions in the

HK Island and Kowloon region

挑戰極限 發揮潛能

全力支持港島及九龍地域中學校際運動比賽

